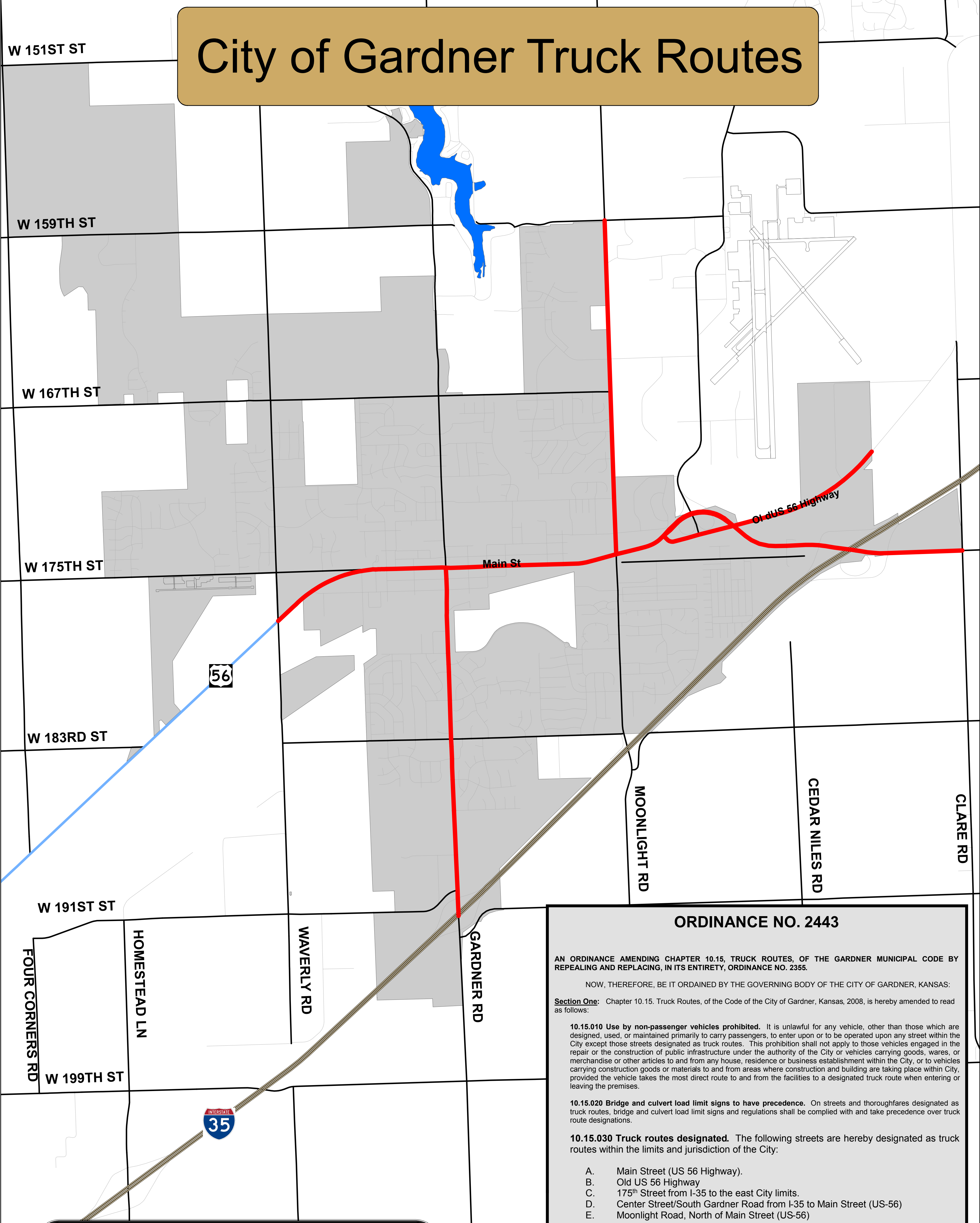


City of Gardner Truck Routes



— TruckRoutes
— Interstate 35
— US 56 Hwy
— Major Roads
■ Gardner Lake
■ City of Gardner

ORDINANCE NO. 2443

AN ORDINANCE AMENDING CHAPTER 10.15, TRUCK ROUTES, OF THE GARDNER MUNICIPAL CODE BY REPEALING AND REPLACING, IN ITS ENTIRETY, ORDINANCE NO. 2355.

NOW, THEREFORE, BE IT ORDAINED BY THE GOVERNING BODY OF THE CITY OF GARDNER, KANSAS:

Section One: Chapter 10.15, Truck Routes, of the Code of the City of Gardner, Kansas, 2008, is hereby amended to read as follows:

10.15.010 Use by non-passenger vehicles prohibited. It is unlawful for any vehicle, other than those which are designed, used, or maintained primarily to carry passengers, to enter upon or to be operated upon any street within the City except those streets designated as truck routes. This prohibition shall not apply to those vehicles engaged in the repair or the construction of public infrastructure under the authority of the City or vehicles carrying goods, wares, or merchandise or other articles to and from any house, residence or business establishment within the City, or to vehicles carrying construction goods or materials to and from areas where construction and building are taking place within City, provided the vehicle takes the most direct route to and from the facilities to a designated truck route when entering or leaving the premises.

10.15.020 Bridge and culvert load limit signs to have precedence. On streets and thoroughfares designated as truck routes, bridge and culvert load limit signs and regulations shall be complied with and take precedence over truck route designations.

10.15.030 Truck routes designated. The following streets are hereby designated as truck routes within the limits and jurisdiction of the City:

- A. Main Street (US 56 Highway).
- B. Old US 56 Highway
- C. 175th Street from I-35 to the east City limits.
- D. Center Street/South Gardner Road from I-35 to Main Street (US-56)
- E. Moonlight Road, North of Main Street (US-56)

10.15.040 Posting of signs. The streets and thoroughfares set forth in GMC 10.15.030 shall be properly identified and posted as truck routes within the limits and jurisdiction of the City.

10.15.050 Violation – Penalty. Any person, firm or corporation who violates the provisions of this chapter is guilty of a public offense and upon conviction thereof shall be fined not less than \$50.00 nor more than \$200.00 for each offense.

Section Two: All other ordinances not in conformity herewith are hereby repealed or amended to conform hereto.

Section Three: This ordinance shall take effect and be in force from and after its passage, approval, and publication as provided by law.

PASSED by the City Council this 3rd day of February, 2014.

APPROVED by the Mayor this 3rd day of February, 2014.

CITY OF GARDNER, KANSAS

(SEAL) /s/Chris Morrow
Mayor

Attest:

/s/Kimberly D. Leroy
City Clerk