

RESOLUTION NO. 1949

A RESOLUTION OF THE GOVERNING BODY OF THE CITY OF GARDNER, KANSAS, CONSENTING TO THE ENLARGEMENT OF CONSOLIDATED MAIN SEWER DISTRICT OF JOHNSON COUNTY, KANSAS, BY THE BOARD OF COUNTY COMMISSIONERS PURSUANT TO JOHNSON COUNTY CHARTER RESOLUTION NO. 29-92.

WHEREAS, there comes before the Governing Body for the City of Gardner, Kansas, the matter of the enlargement of Consolidated Main Sewer District of Johnson County, Kansas, and

WHEREAS, the tract to be included within the sewer district governed by the County is described on Exhibit "A" attached hereto and made a part of this Resolution, and

WHEREAS, the provisions of Charter Resolution No. 29-92, Johnson County, Kansas, and any amendments thereto, provide that when any such sewer district extends into the city limits of any incorporated city, the Board of County Commissioners shall not have power to create or extend such sewer district within the city limits without consent of the Governing Body of the city;

NOW, THEREFORE, BE IT RESOLVED BY THE GOVERNING BODY OF THE CITY OF GARDNER, KANSAS,

SECTION ONE: that the Governing Body for the City of Gardner, Kansas, does hereby consent that the property shown and described on Exhibit "A" be included within the Consolidated Main Sewer District to be governed by the Board of County Commissioners of Johnson County, Kansas.

ADOPTED by the Governing Body this 2nd day of May, 2016.

SIGNED by the Mayor this 2nd day of May, 2016.

CITY OF GARDNER, KANSAS

(SEAL)

/s/ Chris Morrow
Chris Morrow, Mayor

Attest:

/s/ Jeanne Koontz
Jeanne Koontz, City Clerk

Approved as to form:

/s/ Ryan B. Denk
Ryan B. Denk, City Attorney

Exhibit A

All that part of the Northeast Quarter of Section 13, Township 14, Range 22, now in the City of Gardner, Johnson County, Kansas, described as follows:

Commencing at the Southwest Corner of the Northeast Quarter of said Section 13, thence North 88 degrees 27 minutes 30 seconds East, along the South line of said Northeast Quarter, a distance of 673.00 feet, to the Point of Beginning; thence continuing North 88 degrees 27 minutes 30 seconds East, along said South a line a distance of 1655.89 feet; thence North 1 degree 32 seconds 30 minutes West, a distance of 512.17 feet; thence North 14 degrees 21 minutes 14 seconds West, a distance of 551.73 feet; thence North 23 degrees 00 minutes 02 seconds West, a distance of 696.90 feet; thence North 43 degrees 26 minutes 30 seconds West, a distance of 421.76 feet; thence North 70 degrees 00 minutes 56 seconds West, a distance of 203.61 feet; thence North 47 degrees 23 minutes 22 seconds West, a distance of 506.45 feet; thence North 84 degrees 59 minutes 32 seconds West, a distance of 296.12 feet, to the Northeast corner of Lot 1, Copper Springs, a subdivision in the City of Gardner, Johnson County, Kansas; thence South 9 degrees 47 minutes 47 seconds West, along the East line of said Lot 1 and its extensions, a distance of 180.00 feet; thence Westerly, along a curve to the left having a radius of 775.00 feet, an initial tangent bearing of North 80 degrees 12 minutes 13 seconds West, a central angle of 0 degrees 30 minutes 21 seconds along the South right of way line of Gretna Street, a distance of 6.84 feet to the Northeast corner of Lot 15 of said Copper Springs; thence South 9 degrees 17 minutes 26 seconds West, along the East line of said Lot 15, a distance of 164.01 feet; thence North 89 degrees 30 minutes 06 seconds West, along the South line of said Lot 15, a distance of 80.00 feet, to a point on the East right of way line of University Drive; thence South 20 degrees 11 minutes 43 seconds East, along said East right-of-way line of University Drive, a distance of 310.90 feet; thence Northeasterly, along a curve to the right having a radius of 225.00 feet, an initial tangent bearing of North 73 degrees 07 minutes 01 seconds East, a central angle of 8 degrees 08 minutes 59 seconds, along the North right-of-way line of 160th Terrace, a distance of 32.00 feet; thence South 8 degrees 44 minutes 00 seconds East, a distance of 50.00 feet; thence Westerly, along a curve to the left having a radius of 175.00 feet, an initial tangent bearing of South 81 degrees 16 minutes 00 seconds West, a central angle of 7 degrees 12 minutes 06 seconds, along the South right-of-way line of 160th Terrace, a distance of 22.00 feet; thence South 20 degrees 11 minutes 43 seconds East, along said East right-of-way line of University Drive, a distance of 80.28 feet; thence continuing Southeasterly along said East right-of-way line of University Drive, on a curve to the left having a radius of 370.00 feet, a central angle of 15 degrees 30 minutes 00 seconds, a distance of 100.09 feet; thence continuing along said East right-of-way line of University Drive, South 35 degrees 41 minutes 43 seconds East, a distance of 115.00 feet; thence South 54 degrees 18 minutes 17 seconds West, a distance of 60.00 feet, to the Southeast corner of Lot 56 of said Copper Springs;



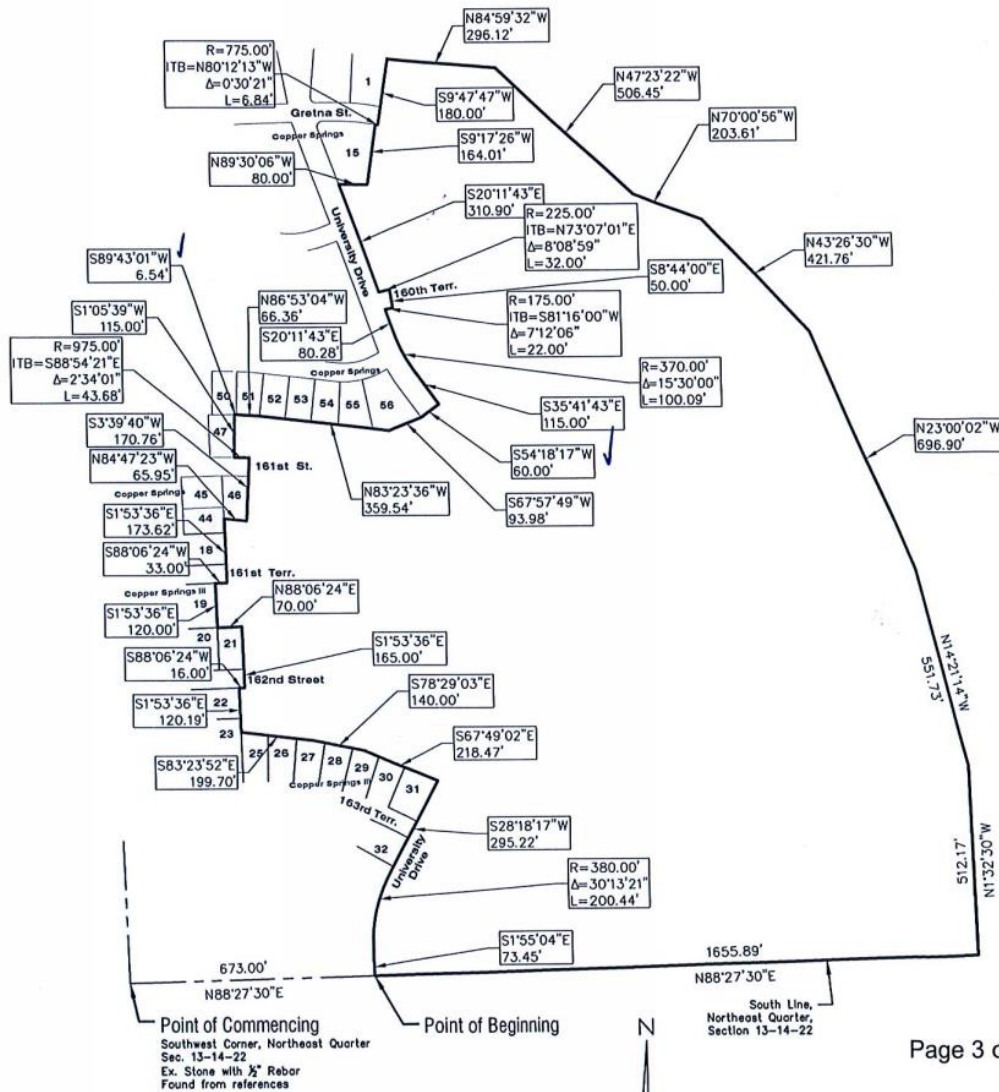
Exhibit A

thence South 67 degrees 57 minutes 49 seconds West, along the South line of said Lot 56, a distance of 93.98 feet; thence North 83 degrees 23 minutes 36 seconds West, along the South line of Lots 52 thru 56 inclusive, of said Copper Springs, a distance of 359.54 feet to the Southeast corner of Lot 51, of said Copper Springs; thence North 86 degrees 53 minutes 04 seconds West, along the South line of said Lot 51, a distance of 66.36 feet, to the Southwest corner of said Lot 51; thence South 89 degrees 43 minutes 01 seconds West, along the South line of Lot 50, of said Copper Springs, a distance of 6.54 feet; thence South 1 degree 05 minutes 39 seconds West, along the East line of Lot 47 of said Copper Springs, a distance of 115.00 feet, to a point on the North right-of-way line of 161st Street; thence Easterly, along said North right-of-way line, on a curve to the right having a radius of 975.00 feet, an initial tangent bearing of South 88 degrees 54 minutes 21 seconds East, a central angle of 2 degrees 34 minutes 01 seconds, a distance of 43.68 feet; thence South 3 degrees 39 minutes 40 seconds West, along the East line of Lot 46 and its extensions, a distance of 170.76 feet; thence North 84 degrees 47 minutes 23 seconds West, along the South line of said Lot 46, a distance of 65.95 feet, to a point on the East line of Lot 44, of said Copper Springs; thence South 1 degree 53 minutes 36 seconds East, along the East line of said Lot 44 and Lot 18 and its extensions, Copper Spring III, a subdivision in the City of Gardner, Johnson County, Kansas, a distance of 173.62 feet, to a point on the South right-of-way line of 161st Terrace; thence South 88 degrees 06 minutes 24 seconds West, along the South right-of-way line of 161st Terrace, a distance of 33.00 feet, to the Northeast corner of Lot 19 of said Copper Springs III, Thence South 1 degree 53 minutes 36 seconds East, along the East line of said Lot 19, a distance of 120.00 feet; thence North 88 degrees 06 minutes 24 seconds East, along the North Line of Lot 21, of said Copper Springs III, a distance of 70.00 feet; thence South 1 degree 53 minutes 36 seconds East, along the East line of said Lot 21 and its extensions, a distance of 165.00 feet, to a point on the South right-of-way line of 162nd Street; thence South 88 degrees 06 minutes 24 seconds West, along the South right-of-way line of said 162nd Street, a distance of 16.00 feet, to the Northeast corner of Lot 22 of said Copper Springs III; thence South 1 degree 53 minutes 36 seconds East, along the East line of said Lot 22 and Lot 23 of said Copper Springs III, a distance of 120.19 feet; thence South 83 degrees 23 minutes 52 seconds East, along the North line of Lots 25, 26, and 27 of said Copper Springs III, a distance of 199.70 feet; thence South 78 degrees 29 minutes 03 seconds East, along the North line of said Lot 27 and Lots 28 and 29 of said Copper Springs III, a distance of 140.00 feet; thence South 67 degrees 49 minutes 02 seconds East, along the North line of said Lot 29 and Lots 30 and 31 of said Copper Springs III, a distance of 218.47 feet to the Northeast corner of said Lot 31, said point being on the West right of line of University Drive; thence South 28 degrees 18 minutes 17 seconds West, along said West right-of-way line, a distance of 295.22; thence continuing along said West right-of-way line of University Drive, on a curve to the left having a radius of 380.00 feet, central angle 30 degrees 13 minutes 21 seconds, a distance of 200.44 feet; thence continuing along said West right-of-way line of University Drive, South 01 degrees 55 minutes 04 seconds East, a distance of 73.45 feet to the Point of Beginning, containing 78.23 acres more or less.



LSD ENLARGEMENT MAP

Exhibit A



Page 3 of 3



Scale: 1" = 400'



**CIVIL ENGINEERS
LAND SURVEYORS - LAND PLANNERS**

122 N. WATER STREET
OLATHE, KANSAS 66061
PHONE: (913) 764-1076
FAX: (913) 764-8635

14 W. PEORIA
PAOLA, KANSAS 66071
PHONE: (913) 657-1076
FAX: (913) 657-6904