

Stormwater Management Plan

City of Gardner, Kansas

January 1, 2024 through December 31, 2026



Federal Permit No. KSR410042

Kansas Permit No. M-MC51-SU01

Date: January 1, 2024

Table of Contents

Section 1: Introduction/Background.....	3
Section 2: Minimum Control Measures	4
2.1 Public Education and Outreach.....	4
2.2 Public Involvement and Participation	5
2.3 Illicit Discharge Detection and Elimination	6
2.4 Construction Site Stormwater Runoff Control.....	7
2.5 Post-Construction Stormwater Management in New Development and Redevelopment Projects..	9
2.6 Pollution Prevention/Good Housekeeping for Municipal Operations.....	10
Section 3: Total Maximum Daily Load (TMDL) Regulated Pollutants	12
Section 4: Water Quality Monitoring for TMDL Assessments	14
Section 5: Modifications to the Stormwater Management Plan	15

Section 1: Introduction/Background

This document is a Stormwater Management Plan (SMP, or the “Plan”) created to help reduce the discharge of pollutants in stormwater runoff from the Municipal Separate Storm Sewer System (MS4) within regulated areas of Gardner, Kansas (map of permitted area included in Appendix A). It outlines stormwater program activities, monitoring requirements, reporting requirements, and responsible parties for implementing these activities.

This Plan was prepared in compliance with Kansas Permit Number M-MC51-SU01 (hereinafter “the Permit”) issued to the City by the Kansas Department of Health and Environment (KDHE) to fulfill requirements of the Clean Water Act.

Permit Effective Date: January 1, 2024

Permit Expiration Date: December 31, 2026

The SMP is designed to:

1. Reduce the discharge of pollutants from the MS4 to the Maximum Extent Practicable (MEP)
2. Implement the Six (6) Minimum Control Measures as listed in Part I., Section C of the Permit, also as follows:
 - a. Public Education and Outreach (MCM #1)
 - b. Public Involvement/Participation (MCM #2)
 - c. Illicit Discharge Detection and Elimination (MCM #3)
 - d. Construction Site Stormwater Runoff Control (MCM #4)
 - e. Post-Construction Stormwater Management in New Development and Redevelopment Projects (MCM #5)
 - f. Pollution Prevention/Good Housekeeping for Municipal Operations (MCM #6)
3. Implement Best Management Practices (BMPs) to reduce to the MEP the discharge of the Total Maximum Daily Load (TMDL) regulated pollutants from the MS4 to the watershed of the impaired stream and/or lake as listed in the Permit.
4. Satisfy the requirements of the Permit, the Clean Water Act, and the Kansas surface water quality statutes and regulations.

Implementation of BMPs consistent with the provisions of the SMP document and this Permit constitute compliance with the standard of reducing pollutants to the Maximum Extent Practicable. Overall responsibility for coordination of activities outlined in this Plan and for reporting will be by the Public Works Director and/or City Engineer by submitting all documents (Stormwater Management Plan and Annual Report) to KDHE.

Section 2: Minimum Control Measures

This section describes the six minimum water quality protection control measures that are required by the City's MS4 Permit. They include the following:

1. Public Education and Outreach (MCM #1)
2. Public Involvement/Participation (MCM #2)
3. Illicit Discharge Detection and Elimination (MCM #3)
4. Construction Site Stormwater Runoff Control (MCM #4)
5. Post-Construction Stormwater Management in New Development and Redevelopment Projects (MCM #5)
6. Pollution Prevention/Good Housekeeping for Municipal Operations (MCM #6)

2.1 Public Education and Outreach

Description

This Minimum Control Measure consists of implementing a public education program to inform individuals, businesses, and organizations about the impacts of stormwater discharges on surface water quality and how they can help reduce pollutants in stormwater runoff. This may include distribution of educational materials to the community and/or conducting outreach activities.

Benefit

An informed public increases awareness of water quality issues in both residents and businesses, creates opportunities for the public to take direct action to improve the health and sustainability of their community, and builds support for program goals making initiatives more effective.

Compliance

Compliance with the public education and outreach minimum control measure requires implementation of BMPs in Part I., Section C.1 of the Permit for a minimum of 7 points total on an annual basis for each calendar year.

A table containing the BMP summary, the measurable goal, the implementation schedule, and points per activity is included in Appendix B. A short description of each planned BMP is included in the table below.

Table 1 – Planned BMPs to meet MCM #1 Requirements

BMP ID	BMP Description	Points Earned by Year		
		2024	2025	2026
P ED & O – 01	Maintain a stormwater webpage for the permittee.	2	2	2
P ED & O – 02	Distribute educational materials addressing various pertinent stormwater public education topics.	2	2	2
P ED & O – 05	Post the municipality’s MS4 permit and SMP document on the municipal webpage.	1	1	1
P ED & O – 06	Provide a method for the public to report illicit discharges.	2	2	2
P ED & O – 08	Provide stormwater education for students at a K-12 campus.	3	3	3
	Total Points Earned	10	10	10
	Total Points Required	7	7	7

2.2 Public Involvement/Participation

Description

This Minimum Control Measure consists of creating opportunities for individuals and organizations to provide public comment and recommendations regarding BMPs and measurable goals and participate in the development and implementation of BMPs to reduce the contamination of stormwater. This program must also comply with state and local public notice requirements.

Benefit

The goal of the Stormwater Management Plan is to improve water quality in local lakes and rivers, which provides benefits to the entire community. As such, the community deserves to have an opportunity to voice opinions on the content of the Plan. Further, input into decisions builds support for and ownership in outcomes. This MCM also provides opportunity to the community to participate in activities, such as park or stream bank clean-up events, that help to remove pollutants from the MS4.

Compliance

Compliance with the public involvement and participation minimum control measure requires implementation of BMPs in Part I., Section C.2 of the Permit for a minimum of 6 points total on an annual basis for each calendar year.

A table containing the BMP summary, the measurable goal, the implementation schedule, and points per activity is included in Appendix B. A short description of each planned BMP is included in the table below.

Table 2 – Planned BMPs to meet MCM #2 Requirements

BMP ID	BMP Description	Points Earned by Year		
		2024	2025	2026
P I/P – 03	Hold park or stream bank clean-up events for public volunteers to aid municipal staff in removing trash, debris, or pollutant sources from the clean-up area.	3	3	3
P I/P – 06	Establish a program to encourage residents to install stormwater treatment best management practices on their property.	2	2	2
P I/P – 07	Enact an ordinance or other enforceable measure that requires pet owners to immediately and properly dispose of their pet’s solid waste at parks or rest areas owned by the permittee.	1	1	1
P I/P – 08	Provide a monetary donation to a scholarship fund for students pursuing a degree in an environmental program which would qualify them to work in a field which can result in water pollution control.	2	2	2
P I/P – 09	Distribute stormwater educational materials to the public within the permit area.	3	3	3
	Total Points Earned	11	11	11
	Total Points Required	6	6	6

2.3 Illicit Discharge Detection and Elimination

Description

This Minimum Control Measure consists of developing, implementing, and enforcing a program to detect and eliminate illicit wastewater discharges or other non-stormwater discharges into the storm sewer system. KDHE requires this program to include, at a minimum:

- Developing a storm sewer system map of the permitted MS4 showing the location of all outfalls, either pipes or open channel drainage, and showing the names and locations of all streams or lakes that receive discharges from those outfalls.
- Enacting and enforcing an ordinance or resolutions to prohibit non-stormwater discharges into the storm sewer system. The City passed pollution prevention regulations (ORD2603) on February 18, 2019 to regulate unlawful discharges into streams and the storm drain system.
- Informing public employees, businesses, and the general public of hazards associated with illegal discharges and improper disposal of waste.
- Developing and implementing a plan to detect and address prohibited non-stormwater discharges.

Benefit

Direct discharges of waste streams can present significant localized impacts to both public health and the environment. Developing legal, technical, and educational means to eliminate illicit discharges provides direct benefits to water quality, the environment, and public health.

Compliance

Compliance with the illicit discharge detection and elimination minimum control measure requires implementation of BMPs in Part I., Section C.3 of the Permit for a minimum of 7 points total on an annual basis for each calendar year.

A table containing the BMP summary, the measurable goal, the implementation schedule, and points per activity is included in Appendix B. A short description of each planned BMP is included in the table below.

Table 3 – Planned BMPs to meet MCM #3 Requirements

BMP ID	BMP Description	Points Earned by Year		
		2024	2025	2026
I D D & E – 04	Implement a program to evaluate MS4 outfalls to identify illicit discharges. Inspect at least 5% of the known MS4 outfalls during a calendar year.	1	1	1
I D D & E – 05	Distribute material providing information on how to avoid illicit discharges to the MS4 permit area, such as proper disposal methods for common substances or materials often discharged illicitly.	2	2	2
I D D & E – 07	Implement a Household Hazardous Waste Collection Program or document that others have implemented such a program to provide service to property owners within the permit area.	3	3	3
I D D & E – 08	Implement a program to increase the reliability of sanitary sewer pump stations above the minimum standard design requirements.	4	4	4
I D D & E – 10	Inspect 5% of the MS4 system stormwater inlets and/or outfalls within the permit area to aid in identifying illicit discharges.	5	5	5
	Total Points Earned	15	15	15
	Total Points Required	7	7	7

2.4 Construction Site Stormwater Runoff Control

Description

This Minimum Control Measure includes developing, implementing, and enforcing a program to reduce pollutants in any stormwater runoff to the MS4 for construction sites disturbing one acre or more, including areas that are less than one acre but are part of a larger common plan for development that disturbs one or more acre. KDHE requires this program to include:

- Where permittees have the authority to do so, ordinances or resolutions shall be enacted to require erosion and sediment controls, as well as sanctions to ensure compliance. The City passed erosion and sediment control regulations (ORD2603) on February 18, 2019 to regulate runoff pollution from active construction sites disturbing more than one acre.

- Requirements for construction site owners or operators to implement erosion and sediment control BMPs.
- Requirements for construction site owners or operators to control waste at construction sites that are likely to cause adverse impacts to water quality.
- Procedures for site plan review which incorporate consideration of potential water quality impacts.
- Procedures for receipt and consideration of information submitted by the public.
- Procedures for site inspection and enforcement of control measures.

Benefit

If left uncontrolled, land disturbance activities can generate significant loads of sediment which can impact both adjoining properties and downstream water bodies. Fortunately, effective controls are easy and cost-effective to implement.

Compliance

Compliance with the construction site stormwater runoff control minimum control measure requires implementation of BMPs in Part I., Section C.4 of the Permit for a minimum of 6 points total on an annual basis for each calendar year.

A table containing the BMP summary, the measurable goal, the implementation schedule, and points per activity is included in Appendix B. A short description of each planned BMP is included in the table below.

Table 4 – Planned BMPs to meet MCM #4 Requirements

BMP ID	BMP Description	Points Earned by Year		
		2024	2025	2026
C S S R C – 01	Implement a requirement for an erosion and sediment control plan for any land disturbance.	2	2	2
C S S R C – 02	Adopt a manual for erosion and sediment control BMPs which are required to be used on construction sites.	2	2	2
C S S R C – 03	Provide access to at least one training class on stormwater pollution prevention plans and associated BMPs.	3	3	3
C S S R C – 05	Establish requirements for construction sites to control wastes. Control shall be imposed to prevent entry into the MS4.	2	2	2
C S S R C – 06	Develop written procedures for inspection of construction sites.	2	2	2
	Total Points Earned	11	11	11
	Total Points Required	6	6	6

2.5 Post-Construction Stormwater Management in New Development and Redevelopment Projects

Description

This Minimum Control Measure requires the development, implementation, and enforcement of a program to address post-construction stormwater runoff controls from both new development and redevelopment sites after development sites disturbing one acre or more, including projects that are less than one acre but are part of a larger common plan for development that disturbs one or more acre. KDHE requires the program to include:

- For permittees that have the authority, ordinances or resolutions to address post-construction runoff from new development and redevelopment projects to the extent allowable under state and local law.
- BMPs to prevent or minimize adverse water quality impacts.
- Strategies which include a combination of structural and/or non-structural BMPs appropriate for the municipality.
- Means to ensure adequate long-term operation and maintenance of BMPs.

Benefit

Conversion of native landscape to developed landscape increases both the volume of runoff and pollutant loads in stormwater. The consequences can include erosion, flooding, and pollution, impacting both downstream property owners and public infrastructure. Stormwater controls included in development sites can help reduce impacts and costs to both private property owners and the public.

Compliance

Compliance with the post-construction stormwater management in new development and redevelopment minimum control measure requires implementation of BMPs in Part I., Section C.5 of the Permit for a minimum of 7 points total on an annual basis for each calendar year.

A table containing the BMP summary, the measurable goal, the implementation schedule, and points per activity is included in Appendix B. A short description of each planned BMP is included in the table below.

Table 5 – Planned BMPs to meet MCM #5 Requirements

BMP ID	BMP Description	Points Earned by Year		
		2024	2025	2026
P-C S M – 01	Adopt a design manual for post-construction stormwater BMPs required for development.	5	5	5
P-C S M – 02	Develop a list of post-construction stormwater BMPs which are required to be incorporated in development projects.	2	2	2
P-C S M – 04	Develop a master plan or comprehensive development plan which establishes zoning and development standards with establishment of BMPs intended to avoid or minimize adverse water quality impacts post-construction.	2	2	2
	Total Points Earned	9	9	9
	Total Points Required	7	7	7

2.6 Pollution Prevention/Good Housekeeping for Municipal Operations

Description

This Minimum Control Measure requires the development and implementation of an operation and maintenance and training program to reduce and prevent stormwater pollution from public facility operations such as park and open space maintenance, fleet and building maintenance, new construction and land disturbance, and stormwater system maintenance.

Benefit

Leading by example on public facilities and projects provides an opportunity to demonstrate and teach proper techniques to other landowners, and it is available on a routine and ongoing basis.

Compliance

Compliance with the pollution prevention/good housekeeping for municipal operations minimum control measure requires implementation of BMPs in Part I., Section C.6 of the Permit for a minimum of 6 points total on an annual basis for each calendar year.

A table containing the BMP summary, the measurable goal, the implementation schedule, and points per activity is included in Appendix B. A short description of each planned BMP is included in the table below.

Table 6 – Planned BMPs to meet MCM #6 Requirements

BMP ID	BMP Description	Points Earned by Year		
		2024	2025	2026
P P/G H – 05	Implement a program for street sweeping in which sweepings are collected and properly disposed of.	2	2	2
P P/G H – 07	Implement a program to inspect stormwater inlets to identify illicit discharges and clean drop inlets of accumulated debris.	2	2	2
P P/G H – 08	Develop and maintain an online storm sewer map that is accessible to the public.	2	2	2
P P/G H – 11	Install a canopy or other covered area for load-out of salt or other de-icing chemicals stored within the permit area.	2	2	2
	Total Points Earned	8	8	8
	Total Points Required	6	6	6

Section 3: Total Maximum Daily Load (TMDL) Regulated Pollutants

The City will continue to review, update, implement, and develop, when necessary, structural and nonstructural BMPs which will reduce the discharge of TMDL regulated pollutants from the MS4 to the Maximum Extent Practicable.

The effort to reduce the discharge of TMDL regulated pollutants is anticipated to be an iterative process with changes in the SMP periodically. This “adaptive management” type process, informed by monitoring data and other information collected during the term of this Permit is recommended to attenuate the discharge of TMDL regulated pollutants listed in the TMDL table below.

TMDL regulated pollutants and impaired streams identified in the city’s Permit are listed below:

TMDL Regulated Pollutant	Specific Impaired Streams to Target
Bacteria	Kill Creek
Nutrients	Kill Creek, Big Bull Creek, and Little Bull Creek

TMDL Best Management Practices (BMPs)

Compliance with Total Maximum Daily Load (TMDL) Best Management Practices and Surface Water Monitoring requires implementation of BMPs in Part II., Section A of the Permit for a minimum of 6 points total on an annual basis for each calendar year.

A table containing the BMP summary, the measurable goal, the implementation schedule, and points per activity is included in Appendix B.

A short description of each planned BMP is included in the table below.

Table 7 – Planned BMPs to meet TMDL Requirements

BMP ID	BMP Description	Points Earned by Year		
		2024	2025	2026
T M D L – 01	Install pet waste stations with bag dispenser, signage, and waste can to encourage pet waste disposal at parks, trails, rest areas, or other public lands.	1	1	1
T M D L – 04	Enact a stream buffer ordinance that imposes stream buffer standards.	2	2	2
T M D L – 05	Develop a pet waste brochure or flyer document to educate the public about animal waste contamination of stormwater. The document must encourage pet owners to pick up their pet’s waste. Information can be distributed or posted to social media or the City’s website.	1	1	1
T M D L – 06	Distribute “only rain down the drain” information.	2	2	2
T M D L – 07	Inspect 10% of all permittee outfalls for dry weather discharges.	3	3	3
	Total Points Earned	9	9	9
	Total Points Required	6	6	6

Section 4: Water Quality Monitoring for TMDL Assessments

Success in achieving reductions in bacteria, nutrients, and sediment will be assessed by directly monitoring in-stream concentrations and evaluating pollutant concentration trends across the Permit period. The monitoring program is conducted by the Johnson County Stormwater Management Program on behalf of the cities within Johnson County.

Beginning in 2024, the Johnson County Stormwater Management Program will implement a planned monitoring program for all watersheds within the County with the objectives of:

1. Measuring effectiveness of BMPs implemented through the City's Permit and Stormwater Management Plan
2. Evaluating MS4 discharge impacts to receiving waters
3. Investigating relative contribution of sources of specific pollutants causing designated use impairment, including nutrients, pathogens, sediment or other applicable parameters related to stormwater from areas serviced by the MS4
4. Gather data to inform future program decisions and prioritization of activities related to the protection of water quality

The monitoring program consists of both rotating and fixed monitoring stations (Appendix C). Rotating stations will be monitored within the rotational year. The rotational year occurs on a five-year recurrence interval and is basin specific. Fixed monitoring states will be monitored on an ongoing basis independent of the rotational year.

Water Quality Monitoring Protocol

Water quality samples will be collected from all monitoring locations a minimum of three or six times per year between April and September, according to the water quality monitoring plan (Appendix C).

Water quality samples are collected as grab samples and pH, Dissolved Oxygen, Temperature, and Specific Conductance measurements are collected in the field at the time of sampling. Other information that is collected in the field at the time of sample collection includes rainfall, streamflow, stream level, and stream velocity.

Samples are analyzed at the Johnson County Wastewater Laboratory. Samples are analyzed for Total Phosphorus as P (mg/L), Ortho-Phosphorus as P (mg/L), Total Kjeldahl Nitrogen (mg/L), Nitrate plus Nitrite as N (mg/L), Total Suspended Solids (mg/L), Turbidity (NTU), and E. Coli bacteria (MPN). Johnson County shall report data for water quality monitoring annually to KDHE and an annual report describing water quality conditions and including all data collected will be provided to the City.

Section 5: Modifications to the Stormwater Management Plan

This SMP will be evaluated annually and modifications to the Plan, if any, will be submitted with the annual report.

For minor BMPs modifications/replacement: Within 60 days of a determination by the permittee or date of written notification from KDHE, the permittee shall modify the BMP if modifications are needed to maintain a program in compliance with this Permit.

For major BMP modifications/replacement: These major modifications are defined as ones which normally take more than 60 days to construct and/or implement. Within 60 days of a determination by the permittee or date of notification from KDHE, the permittee shall provide a plan and schedule for the update/replacement of the BMP. The plan and schedule are subject to KDHE approval.

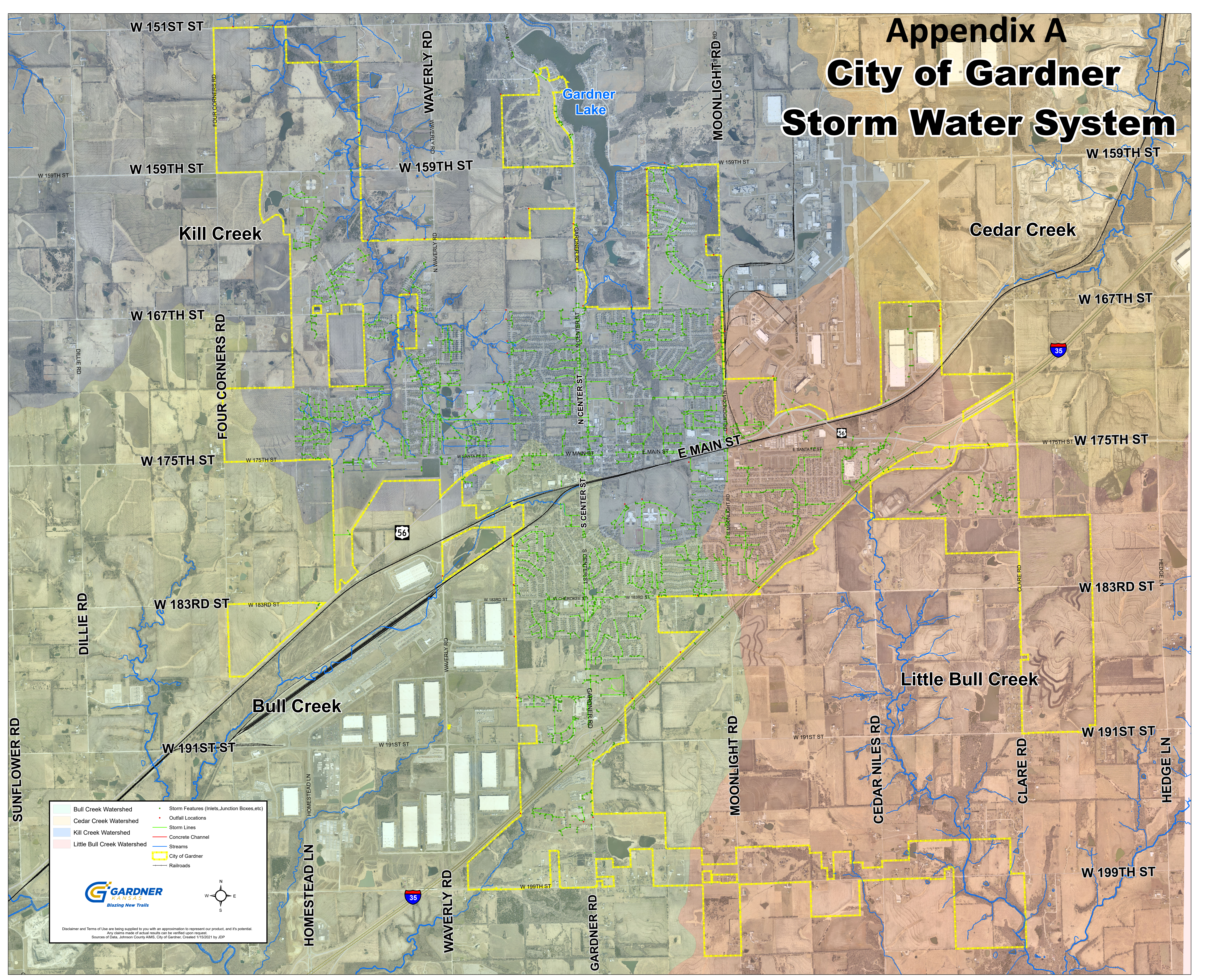
List of Appendices

Appendix A – Map of Permit Area

Appendix B – MS4 Permit

Appendix C – Water Quality Monitoring Plan

Appendix A City of Gardner Storm Water System



Bull Creek Watershed	Storm Features (Inlets, Junction Boxes, etc)
Cedar Creek Watershed	Outfall Locations
Kill Creek Watershed	Storm Lines
Little Bull Creek Watershed	Concrete Channel
City of Gardner	Streams
Railroads	

GARDNER
KANSAS
Blazing New Trails

Disclaimer and Terms of Use are being supplied to you with an approximation to represent our product, and it's potential. Any claims made of actual results can be verified upon request. Sources of Data: Johnson County AIMS, City of Gardner. Created 11/15/2021 by JDP

Division of Environment
Curtis State Office Building
1000 SW Jackson St., Suite 400
Topeka, KS 66612-1368



Phone: 785-296-1535
Fax: 785-559-4264
www.kdheks.gov

Janet Stanek, Secretary

Laura Kelly, Governor

December 28, 2023

GARDNER, CITY OF
Public Works Dept.
120 E Main
Gardner, KS 66030

RE: Kansas Water Pollution Control
Permit No. M-MC51-SU01
GARDNER, CITY OF

Dear Permittee:

You have fulfilled all the filing requirements for a Kansas Water Pollution Control Permit and Authorization to Discharge under the National Pollutant Discharge Elimination System (NPDES). We are pleased to forward your new permit. While it is permissible to make as many copies as needed for monitoring and reporting purposes, you need to retain the original permit for your files.

We suggest you carefully read the terms and conditions of your permit and understand these terms and conditions are enforceable under both State and Federal law.

The KDHE's Bureau of Water has recently implemented a new online permit processing and data management system, Kansas Environmental Information System (KEIMS).

Any additional reports shall be submitted to the Kansas Department of Health and Environment, Bureau of Water-TSS, 1000 SW Jackson St., Suite 420, Topeka, Kansas 66612-1367.

If you have any questions concerning this permit, contact Andrew Bowman at (785) 296-2683.

Sincerely,

A handwritten signature in cursive script that reads "Thomas C. Stiles".

Thomas C Stiles
Director, Bureau of Water

pc: NEDO - District
SS- Permit File

KANSAS WATER POLLUTION CONTROL
MUNICIPAL SEPARATE STORM SEWER SYSTEM (MS4) PERMIT
AND AUTHORIZATION TO DISCHARGE UNDER
THE NATIONAL POLLUTANT DISCHARGE ELIMINATION SYSTEM

Pursuant to the provisions of Kansas Statutes Annotated 65-164 and 65-165, the Federal Water Pollution Control Act as amended, 33 U.S.C. 1251 et seq., the "Act",

Permittee: Gardner, City of
Permittee Address: 120 East Main
Gardner, Kansas 66030
Drainage Basin: Kansas and Marias des Cygnes Rivers
County: Johnson

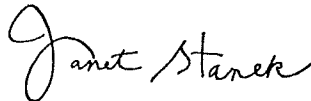
is hereby authorized to discharge stormwater from the municipal separate storm sewer system (MS4) as described herein in accordance with the limitations, conditions and requirements set forth in this permit.

This permit is effective January 1, 2024, supersedes the previously issued MS4 general permit M-MC51-SU01 and expires December 31, 2026.

PERMIT AREA AND AUTHORIZED DISCHARGES

This permit covers all areas within the permittee's MS4 jurisdiction which are also located in the Urban Area as defined by the most recent U.S. Census (the Permit Area). The Permit Area may change based upon areas incorporated into or removed from the permittee's jurisdictional area during the term of this permit.

This permit authorizes the discharge of all existing or new stormwater point source discharges from the Municipal Separate Storm Sewer System (MS4) located within the Permit Area. New stormwater discharges are those which are created and/or incorporated into the permittee's MS4 during the term of this permit.



Secretary, Kansas Department of Health and Environment

December 26, 2023
Date

PART I. STORMWATER MANAGEMENT PROGRAM (SMP) DOCUMENT REQUIREMENTS

A. Current Stormwater Management Program

The permittee shall continue to implement and enforce the current Stormwater Management Program (SMP), as documented in the SMP document, until an updated SMP is implemented.

Any updated SMP shall be designed to:

1. Reduce the discharge of pollutants from the municipal separate storm sewer system (MS4) to the Maximum Extent Practicable (MEP),
2. Continue to implement the six minimum control measures as listed in PART I Section C,
3. Satisfy the requirements of this permit, the Clean Water Act and Kansas surface water quality statutes and regulations.

Implementation of Best Management Practices (BMPs) consistent with the provisions of the SMP document and this permit constitutes compliance with the standard of reducing pollutants to the Maximum Extent Practicable.

B. Updated Stormwater Management Program document

Modification of the SMP is permitted as the need arises. Modifications can be accomplished with any of the following methods:

1. Normally the SMP document is updated near the end of the calendar year and submitted to KDHE for review along with the annual report which is due after the first of the calendar year but before the 28th of February. The permittee is required to implement the SMP, which was most recently submitted to KDHE along with the annual report, throughout the entire year and may continue to implement the updated SMP until subsequently modified. The updated SMP as submitted must be accepted by KDHE. If KDHE finds the SMP is not acceptable, requirements for modification and resubmittal will be addressed to the permittee.
2. If it becomes necessary to modify the SMP at some time other than when the annual report is submitted to KDHE, the permittee may make the modifications to the SMP document and submit the SMP document to KDHE for acceptance. The permittee shall not begin implementation of the modified SMP until after KDHE has provided acceptance.
3. KDHE may require the permittee to modify the SMP at any time, requirements for modification and resubmittal will be addressed to the permittee.

C. Six Minimum Control Measures

The Permittee is responsible for implementing a stormwater management program to comply with the requirements of 40 CFR 122.34, including implementation of the six minimum control measures, as described in the body of this permit. In addition to the program requirements, the Permittee is responsible for implementing adequate BMPs, listed in Appendices A through G, to claim at least the required number of points in each calendar year. Claiming points alone does not satisfy the requirements of this permit if the program does not comply with the requirements of 40 CFR 122.34.

C. Six Minimum Control Measures (continued)

For all six minimum control measures, documentation of compliance with each measure's goal and implementation time - schedule must be maintained on file. Permittee is responsible for implementing an adequate program to comply with the requirements of this permit and be able to claim the associated required BMP points. Extent of point compliance, i.e., equaling or exceeding the required annual point total or failure to reach the required annual point total, must be reported in the Annual Report.

For any of the six minimum control measures, the permittee is not limited to implementation of the BMPs listed in the tables. Several other BMPs may be implemented, however, only implementation of the BMPs listed in the tables may be documented and counted toward the required annual point total. Additional points may be requested by the permittee for BMPs that are not included in the tables. The request must be submitted to KDHE prior to the annual report submission period in order for points to be included towards the current year. Points cannot be claimed on the annual report if not approved by KDHE.

Guidance useful in implementing the six minimum control measures can be obtained from the Online Water Library (OWL) of the Center for Watershed Protection. A list of links to helpful guidance documents, including OWL, can be found on the KDHE Municipal Stormwater Program website at the following url:

Additional helpful guidance and/or resources in implementing the six minimum control measures can be found at the following link:

<https://www.kdhe.ks.gov/DocumentCenter/View/28893/MS4-NPDES-Permit-Helpful-Guidance-andor-Resources-PDF>

Document titled "MS4 NPDES Permit Helpful Guidance and/or Resources"

The six minimum control measures and requirements are as follows:

1. Public Education and Outreach

The permittee shall continue to implement a public education program which includes distribution of educational materials to the community or conducting equivalent outreach activities which address the impacts of stormwater discharges on water bodies and the steps the public can take to reduce pollutants in stormwater runoff.

The implementation of BMPs for this minimum control measure must result in accumulation of a minimum of 7 points for each calendar year. Appendix A lists various BMPs, measurable goals, and the required timing-period or implementation-schedule to qualify for the points in the year. The permittee may request that KDHE accept additional BMPs of the permittee's creation that meets the intent of this minimum control measure for a reasonable number of points, as described under Part C.

In cases where the permittee is already implementing a BMP which qualifies for points, they may continue implementation of the BMP and earn the listed points as allowed under this permit.

Multiple BMPs involve holding public hearings or public forums; a single public hearing or forum can be held which addresses multiple topics and points claimed for all of the multiple BMPs implemented.

2. Public Involvement/Participation

The permittee shall continue to implement a public involvement and participation program to solicit public comments and recommendations regarding the BMPs and measurable goals utilized by the permittee to comply with the permit. The permittee shall comply with State and local public notice requirements when implementing a public involvement and participation program.

The implementation of BMPs for this minimum control measure must result in accumulation of a minimum of 6 points for each calendar year. **Appendix B** lists various BMPs, measurable goals, and the required timing-period or implementation-schedule to qualify for the points in the year. The permittee may request that KDHE accept additional BMPs of the permittee's creation that meets the intent of this minimum control measure for a reasonable number of points, as described under Part C.

In cases where the permittee is already implementing a BMP which qualifies for points, they may continue implementation of the BMP and earn the listed points as allowed for the first year of implementation under this permit as well as subsequent years.

Multiple BMPs involve holding public hearings or public forums; a single public hearing or public forums can be held which addresses multiple topics and points claimed for all of the multiple BMPs implemented.

3. Illicit Discharge Detection and Elimination

The permittee shall:

- a. Continue to implement and enforce a program to detect and eliminate illicit discharges into the MS4.
- b. Maintain a storm sewer system map of the permittee's MS4, showing the location of all outfalls, either pipes or open channel drainage, showing the names and location of all streams or lakes receiving discharges from those outfalls. A copy of the map shall be submitted to KDHE with the annual report if requested by KDHE.
- c. Implement and enforce an ordinance or resolution to prohibit non-stormwater discharges into the storm sewer system and implement appropriate enforcement procedures and actions. A copy of the ordinance or resolution shall be submitted to KDHE with the annual report if requested by KDHE.
- d. Inform public employees, businesses, and the general public of hazards associated with illegal discharges and improper disposal of waste.
- e. Develop and implement a plan to detect/inspect for and address prohibited non-stormwater discharges, including illegal dumping, to the storm sewer system. The plan must include efforts to identify and evaluate dry weather MS4 discharges to detect and eliminate any associated illicit discharge. Unless identified by either the permittee or KDHE as a significant source of pollutants to waters of the state, several types of non-stormwater flow are not normally prohibited from entering the Municipal Separate Storm Sewer System:

3. Illicit Discharge Detection and Elimination (continued)

Discharges which are not necessarily prohibited include:

Water line flushing	Footing drains
Diverted stream flows	Lawn watering
Rising ground waters	Individual residential car washing
Uncontaminated groundwater infiltration as defined under 40 CFR 35.2005(20) to separate storm sewers	Occasional not-for-profit car wash activities
Uncontaminated pumped groundwater	Flows from riparian habitats and wetlands
Contaminated groundwater if authorized by KDHE and approved by the department	Dechlorinated swimming pool discharges excluding filter backwash
Discharges from potable water sources	Street wash water (excluding street sweepings which have been removed from the street)
Foundation drains	Discharges or flows from firefighting activities
Air condition condensation	Heat pump discharge waters (residential only)
Springs	Treated wastewater meeting requirements of an NPDES permit
Irrigation waters	Sump pump drains
Water from crawl space pumps	Other discharges determined not to be a significant source of pollutants to waters of the state, a public health hazard or nuisance

The implementation of BMPs for this minimum control measure must result in accumulation of a minimum of 7 points for each calendar year. **Appendix C** lists various BMPs, measurable goals, and the required timing-period or implementation-schedule to qualify for the points in the year. The permittee may request that KDHE accept additional BMPs of the permittee's creation that meets the intent of this minimum control measure for a reasonable number of points, as described under Part C.

In cases where the permittee is already implementing a BMP which qualifies for points, they may continue implementation of the BMP and earn the listed points as allowed for the first year of implementation under this permit as well as subsequent years.

Multiple BMPs involve holding public hearings or public forums; a single public hearing or public forums can be held which addresses multiple topics and points claimed for all of the multiple BMPs implemented.

4. Construction Site Stormwater Runoff Control

The permittee shall continue to maintain a program to reduce pollutants in any stormwater runoff to the MS4 from construction activities that result in a land disturbance of greater than or equal to one acre. Reduction of pollutant discharge associated with stormwater from construction activity disturbing less than one acre must be included in the program if that construction activity is part of a larger common plan of development or sale that would disturb one acre or more. The program must include, at a minimum, all the following:

- a. Maintain and enforce an ordinance or resolution, if the permittee has the authority to do so, to require erosion and sediment controls, as well as sanctions to ensure compliance, to the extent allowable under State and local law. A copy of the ordinance or resolution shall be submitted to KDHE with the annual report if requested by KDHE.
- b. Maintain requirements for construction site owners or operators to implement appropriate erosion and sediment control best management practices.
- c. Maintain requirements for construction site owners or operators to control waste such as discarded building materials, concrete truck washout, chemicals, litter, and sanitary waste at the construction site that are likely to cause adverse impacts to water quality.
- d. Maintain procedures for site plan review which incorporate consideration of potential water quality impacts.
- e. Maintain procedures for receipt and consideration of information submitted by the public.
- f. Maintain procedures for site inspection and enforcement of control measures.

The implementation of BMPs for this minimum control measure must result in accumulation of a minimum of 6 points for each calendar year. **Appendix D** lists various BMPs, measurable goals, and the required timing-period or implementation-schedule to qualify for the points in the year. The permittee may request that KDHE accept additional BMPs of the permittee's creation that meets the intent of this minimum control measure for a reasonable number of points, as described under Part C.

In cases where the permittee is already implementing a BMP which qualifies for points, they may continue implementation of the BMP and earn the listed points as allowed for the first year of implementation under this permit as well as subsequent years.

Multiple BMPs involve holding public hearings; a single public hearing can be held which addresses multiple topics and points claimed for all of the multiple BMPs implemented.

5. Post-Construction Stormwater Management in New Development and Redevelopment Projects

The permittee shall continue to maintain a program to address post-construction stormwater runoff from new development and redevelopment projects that disturb greater than or equal to one acre, including projects less than one acre that are part of a larger common plan of development or sale, that discharge into the MS4. The program must include, at a minimum, all the following:

- a. Maintain a requirement for BMPs to prevent or minimize adverse water quality impacts.
- b. Maintain strategies which include a combination of structural and/or non-structural BMPs appropriate for the municipality.
- c. Maintain and enforce an ordinance or resolution, if the permittee has the authority to do so, to address post-construction runoff from new development and redevelopment projects to the extent allowable under State and local law.
- d. Ensure adequate long-term operation and maintenance of structural BMPs.

The implementation of BMPs for this minimum control measure must result in accumulation of a minimum of 7 points for each calendar year. **Appendix E** lists various BMPs, measurable goals, and the required timing-period or implementation-schedule to qualify for the points in the year. The permittee may request that KDHE accept additional BMPs of the permittee's creation that meets the intent of this minimum control measure for a reasonable number of points, as described under part C.

In cases where the permittee is already implementing a BMP which qualifies for points, they may continue implementation of the BMP and earn the listed points as allowed for the first year of implementation under this permit as well as subsequent years.

Multiple BMPs involve holding public hearings; a single public hearing can be held which addresses multiple topics and points claimed for all of the multiple BMPs implemented.

6. Pollution Prevention/Good Housekeeping for Municipal Operations

The permittee shall continue to implement an operation and maintenance program that includes employee training to prevent and reduce stormwater pollution from municipal operations. The program must include, at a minimum, the following:

- a. Training shall be implemented for all necessary municipal staff, such as park and open space maintenance, fleet and building maintenance, new construction and land disturbances, and stormwater system maintenance.
- b. Maintain a program to ensure proper use and storage of materials at permittee owned facilities that use pesticides, herbicides, and fertilizers.

The implementation of BMPs for this minimum control measure must result in accumulation of a minimum of 6 points for each calendar year. **Appendix F** lists various BMPs, measurable goals, and the required timing-period or implementation-schedule to qualify for the points in the year. The permittee may request that KDHE accept additional BMPs of the permittee's creation that meets the intent of this minimum control measure for a reasonable number of points, as described under Part C.

6. Pollution Prevention/Good Housekeeping for Municipal Operations (continued)

In cases where the permittee is already implementing a BMP which qualifies for points, they may continue implementation of the BMP and earn the listed points as allowed for the first year of implementation under this permit as well as subsequent years.

Multiple BMPs involve holding public hearings; a single public hearing can be held which addresses multiple topics and points claimed for all of the multiple BMPs implemented.

D. Total Maximum Daily Load (TMDL) Regulated Pollutants

The Permittee shall continue to review, update, implement and develop, when necessary, structural and non-structural BMPs which will reduce to the Maximum Extent Practicable the discharge of the TMDL regulated pollutants from the MS4 as listed in PART II.

The effort to reduce the discharge of TMDL regulated pollutants is anticipated to be an iterative process with changes in the SMP periodically, generally not more frequently than annually, possibly every two or three years. This "adaptive management" type process is, informed by monitoring data and other information collected during the term of this permit, recommended to attenuate the discharge of TMDL regulated pollutants listed in the TMDL Table of PART II of this permit. Each updated SMP document shall provide:

1. Best Management Practices (BMPs)

Updates of the SMP document can include structural and/or non-structural BMPs implemented to reduce the discharge of TMDL regulated pollutants from the MS4. This section of the SMP shall identify or include:

- a. BMPs which will be implemented, including non-structural and/or structural measures, as selected from EPA's "National Menu of Best Management Practices (BMPs) for Stormwater" or from a local or regionally appropriate storm drainage criteria manual such as the Kansas City Metro Chapter of the American Public Works Association (APWA) Manual of Best Management Practices for Stormwater Quality or such other BMP manuals as are appropriate (links for the National Menu of Best Management Practices (BMPs) for Stormwater and the Kansas City Metro Chapter of the American Public Works Association (APWA) Manual of Best Management Practices for Stormwater Quality can be found on the KDHE document titled "MS4 NPDES Permit Helpful Guidance and/or Resources").
- b. Include a description of non-structural practices being implemented, including the six minimum control measures and/or other source control measures.
- c. Include the location of the structural BMPs.
- d. Identify the design factors associated with the structural BMPs.
- e. Include information on the reported effectiveness of the chosen BMPs based on regionally appropriate data or performance analyses in the International Stormwater BMP Database (a link to the Database can be found on the KDHE document titled "MS4 NPDES Permit Helpful Guidance and/or Resources").
- f. Include a schedule for constructing and/or implementing additional selected BMPs to reduce the discharge of TMDL regulated pollutants.

- g. Include an inspection/maintenance plan and schedule for each BMP, as appropriate.
- h. Include a plan and schedule to monitor the effectiveness of the BMPs to reduce the discharge of TMDL regulated pollutants.

2. Measurable goals to assess the effectiveness of the TMDL BMPs

As with the implementation of all stormwater BMPs in the permittee's SMP, BMPs implemented to reduce the discharge of TMDL pollutants listed in the TMDL Table in Part II must include measurable goals.

Overall TMDL measurable goals should be based upon either stormwater sampling in the MS4 or in stream sampling of the stream(s) existing in, or adjacent to the Permit Area (or Permit Areas for co-operative stormwater control efforts as provided in paragraph 4 below) during or immediately following storm events. Stormwater sampling, for the purpose of documenting compliance with goals, within the MS4 will normally compare results upstream of the BMP and downstream of the BMP or perhaps prior to implementation of the BMP and following implementation of the BMP if the BMP is non-structural. The monitoring results of samples obtained to iteratively guide performance evaluation, subsequent selection and adjustments of BMPs should be maintained on file in compliance with the Standard Conditions records retention requirement. These results do not need to be reported to KDHE via the electronic DMR process at this time. However, these monitoring results and/or a summary of the results are to be reported in the Annual Report as required in PART IV REPORTING. The permittee may use modeling that has been properly calibrated to determine that BMP measurable goals are being met.

Measurable goals for reducing TMDL pollutants contributed by MS4s can be expressed in quantifiable values to:

- a. reduce the total mass of pollutants, and
- b. be expressed as average and median values (percent reduction of inflow volume, reduction in pollutant mass loading) or for bacteria as a geometric mean.

3. Maps shall be developed and maintained which illustrate:

- a. The Permit Area, boundaries of the contributing drainage basins and primary sub-basins, within and outside the Permit Area.
- b. The locations of the BMPs, if structural.
- c. The location of TMDL stream monitoring locations if such monitoring is required.
- d. Storm sewer collection system which includes the outfalls within the Permit Area where the MS4 drains to TMDL listed impaired streams or lakes.

4. Alternative Stormwater Offsite Pollution Reduction Program

As appropriate, when waters of the state are affected by TMDL regulated pollutants from both the Permit Area and surrounding non-jurisdictional lands, the permittees may incorporate and implement plans through their SMP for an offsite pollution reduction program to install Best Management Practices (BMPs) in alternative locations, including outside the Permit Area, within the watershed shared by urban entities or urban and non-urban entities. Any alternative stormwater offsite pollution reduction program should be developed with watershed interests, such as other communities, Watershed Restoration and Protection Strategy (WRAPS) groups and Conservation Districts lying outside the Permit Area for the joint purpose of reducing pollutant loads generated from urban and non-urban lands within the shared watershed. Candidate offsite locations and practices will be consistent with implementing existing watershed plans that identify specific urban and non-urban (such as agricultural) BMP types and locations to achieve TMDLs reductions. The Alternative Stormwater Offsite Pollution Reduction Program shall be subject to KDHE approval and approved by KDHE prior to incorporation into the permittee's SMP.

E. Responsible Parties

The Stormwater Management Program (SMP) Document should list the municipal parties (employees and/or staff and/or departments) responsible for compliance with the SMP document. There is no requirement to name individual employees, rather, organizational units such as positions, divisions or departments may be named as the responsible parties.

F. Monitoring Requirements

The SMP document should address the monitoring requirements for surface water and/or storm water within the MS4 collection system. Surface water monitoring requirements addressed in this permit may be found in PART II.

G. Reporting Requirements

See PART IV.

PART II. TOTAL MAXIMUM DAILY LOAD (TMDL) BEST MANAGEMENT PRACTICES AND SURFACE WATER MONITORING

This Part II requirement addresses implementation of TMDL BMPs only, Surface Water monitoring associated with wet weather storm events is not applicable to this permit. No action is required at this time for Surface Water Monitoring by the permittee as such monitoring under this permit is not presently determined to be necessary or other are conductions such monitoring.

A. TMDL BMP Implementation Requirements

The implementation of BMPs for this minimum control measure must result in accumulation of a minimum of 6 points for each calendar year. Appendix G lists various BMPs, measurable goals, and the required timing-period or implementation-schedule to qualify for the points in the year.

In cases where the permittee is already implementing a BMP which qualifies for points, they may continue implementation of the BMP and earn the listed points as allowed for the first year of implementation under this permit as well as subsequent years.

Multiple BMPs involve holding public hearings; a single public hearing can be held which addresses multiple topics and points claimed for all of the multiple BMPs implemented.

In addition to implementing a TMDL Pollutant Reduction and Monitoring program as required above, the permittee must implement sufficient listed BMPs in Appendix G to qualify for the required number of points.

1. Implementation

The permittee shall implement Best Management Practices (BMPs) to reduce to the Maximum Extent Practicable the discharge of the following TMDL regulated pollutants from the MS4 to the watershed of impaired stream and/or lake.

T M D L T A B L E

Total Maximum Daily Loads, TMDLs, are established for waters found on the CWA Section 303d list of impaired waters. The purpose of the TMDL is to define the necessary and allowable pollutant load that may enter those impaired waters, so those waters attain a condition that fully supports all their designated uses. The TMDL then allocates portions of that allowable load among the likely point and non-point sources discharging the pollutant into the water or its watershed. Implementation of the TMDL by the NPDES and 319 programs brings about reductions in current loading from those sources through numeric goals or narrative actions to the allowable level allocated to each source.

TMDL Regulated Pollutant	Specific Impaired Stream(s) to Target
Bacteria	Kill Creek
Nutrients	Kill Creek, Big Bull Creek, and Little Bull Creek

B. Monitoring Requirements

This Part II, B. requirement is not applicable to this permit. No action is required at this time, by the permittee, for Total Maximum Daily Load (TMDL) Surface Water Monitoring as such monitoring under this permit is not presently determined to be necessary or others are conducting such monitoring. The Johnson County MS4 NPDES permit (Permit No. M-KS52-SU02) requires Johnson County to conduct the TMDL Surface Water Monitoring within Johnson County and report the results via the Kansas Environmental Information Management System (KEIMS). The permittee may conduct surface water monitoring to evaluate performance of the BMPs or otherwise gather data. The monitoring results of samples obtained to determine performance of BMPs should be maintained on file in compliance with the Standard Conditions records retention requirement, these results do not need to be reported to KDHE via KEIMS at this time. Johnson County has implemented the Water Quality Monitoring Approach as outlined in the April 20, 2018 Technical Memorandum 3 (Option 2) as prepared by HDR.

PART III. INDUSTRIAL STORMWATER DISCHARGES:

This PART III requirement is not applicable to Phase II permittees. No action is required at this time for Monitoring Industrial Stormwater Discharges.

PART IV. REPORTING

- A. The permittee shall submit a calendar year annual report to KDHE by February 28 of each year. The annual report shall be submitted to KDHE in the form specified by KDHE. The completed annual report along with attachments or other documents which need to be submitted in association with the annual report shall all be submitted in PDF file formats to KDHE. As KDHE implements the KEIMS web-based system, all documents submitted will be required to be uploaded through the KEIMS program. KDHE will provide notification to the permittee when annual reporting via the KEIMS system is required. The annual report shall cover the activities during the previous calendar year and must include:
1. Provide the status of compliance with permit conditions, an assessment of the appropriateness of the implemented Best Management Practices, progress towards achieving the statutory goal of reducing the discharge of pollutants to the maximum extent practicable, and the measurable goals (with an indication of the progress toward meeting the goals) for each of the six minimum control measures.
 2. Provide results of information collected and analyzed, (for example test results, surveys, or public comments/input) during the annual reporting period. This may include monitoring data used to assess the success of best management practices with respect to reduction in pollutant discharge. Include an interpretation of the information which addresses success or failure of the portion of the program for which the information applies.
 3. For Best Management Practices (BMPs), which are directed at reducing the discharge of TMDL regulated pollutants, provide the measurable goals of each BMP with an indication of the progress toward meeting the goals.
 4. Provide a summary of the stormwater activities which are scheduled to be undertaken during the next calendar year (including an implementation schedule).
 5. Provide a summary of the stormwater activities that were scheduled to be undertaken during the previous calendar year and the status of these activities.
 6. Provide a map showing changes in the permittee's Permit Area if the Permit Area has changed within the year.
 7. Provide a description of significant changes in any of the BMPs.
 8. Provide copies of any ordinances or resolutions which were updated in the last year and are associated with the SMP.
 9. Provide a list of other parties (such as other municipalities or consultants), which are responsible for implementing any of the program areas of the Stormwater Management Program.
- B. Information and monitoring results gathered in compliance with PART II must be reported in compliance with the reporting requirement as addressed in B. Monitoring Requirements.
- C. EPA's National Pollutant Discharge Elimination System (NPDES) Electronic Reporting Rule ("NPDES eRule") requires regulated entities to report data electronically. KDHE has developed electronic reporting tools to assist permittees in complying with the EPA electronic reporting rule. Unless a waiver has been approved by KDHE, permittees are required to submit information electronically. The electronic reporting system is called the **Kansas Environmental Information Management System (KEIMS)** and can be accessed at <https://keims.kdhe.ks.gov>.

STANDARD CONDITIONS FOR
KANSAS WATER POLLUTION CONTROL AND
NATIONAL POLLUTANT DISCHARGE ELIMINATION SYSTEM MS4 PERMITS

1. Representative Sampling and Monitoring Report Submittals:
 - A. Samples and measurements taken as required herein shall be representative of the quality and quantity of the monitored discharge. Test results shall be recorded for the day the samples were taken. If sampling for a parameter was conducted across more than one calendar day, the test results may be recorded for the day sampling was started or ended. All samples shall be taken at the locations designated in this permit, and unless specified, at the outfall/monitoring location(s) before the wastewater joins or is diluted by any other water or substance.
 - B. EPA's *National Pollutant Discharge Elimination System (NPDES) Electronic Reporting Rule* ("NPDES eRule") requires regulated entities to report data electronically. KDHE has developed electronic reporting tools to assist permittees in complying with the EPA electronic reporting rule. Unless a waiver has been approved by KDHE, permittees are required to submit information electronically. The electronic reporting system is called the **Kansas Environmental Information Management System (KEIMS)** and can be accessed at <https://keims.kdhe.ks.gov>. Monitoring results shall be submitted no later than the 28th day of the month following the completed reporting period. If granted a waiver, signed and certified copies of data, information and reports, required herein, prepared in accordance with KAR 28-16-59, may be e-mailed as scanned attachments to kdhe.bowkeims@ks.gov, faxed to 785.559.4257, or sent by U.S. mail to:

Kansas Department of Health & Environment
Bureau of Water-Technical Services Unit
1000 SW Jackson Street, Suite 420
Topeka, KS 66612-1367
2. Definitions:
 - A. A "grab sample" is an individual sample collected in less than 15 minutes. A "composite sample" is a combination of individual samples in which the volume of each individual sample is proportional to the flow, or the sample frequency is proportioned to the flow rate over the sample period, or the sample frequency is proportional to time.
 - B. The terms "Director", "Division", and "Department" refer to the Director, Division of Environment, Kansas Department of Health and Environment, respectively.
 - C. "Severe property damage" means substantial physical damage to property, damage to the treatment/control facilities which causes them to become inoperable, or substantial and permanent loss of natural resources which can reasonably be expected to occur in the absence of a diversion.
3. Duty to Mitigate: The permittee shall take all reasonable steps to minimize or prevent any damage to the environment or hazard to human health from any discharge in violation of this permit.
4. Test Procedures: All analyses required by this permit shall conform to the requirements of 40 CFR Part 136, unless otherwise specified, and shall be conducted in a laboratory accredited by the Department. For each measurement or sample, the permittee shall record the exact place, date, and time of measuring/sampling; the date and time of the analyses, the analytical techniques or methods used, minimum detection or reportable level, and the individual(s) who performed the measuring/sampling and analysis and, the results. If the permittee monitors any pollutant at the location(s) designated herein more frequently than required by this permit, using approved procedures, the results shall be included in the Monitoring Report form required in 1.B. above. Such increased frequencies shall also be indicated.
5. Change in Discharge: All stormwater discharges shall be in compliance with the conditions of the permit. Modification or expansion of the storm sewer system is allowed. All new storm sewer segments and outfalls constructed after the effective date of the permit, which are located within the permit area, are authorized under the permit and must comply with the permit conditions.
6. Proper Operations and Maintenance: The permittee shall at all times properly operate and maintain all facilities and systems of treatment and control (and related appurtenances) which are installed or used by the permittee to achieve compliance with the requirements of this permit and Kansas and Federal law.

7. **Incident Reporting:** The permittee shall report any unanticipated significant incidents which would be expected to result in non-compliance with the permit requirements within 24 hours from the time the permittee became aware of the incident. A written submission shall be provided within 5 days of the time the permittee became aware of the incident. The written submission shall contain a description of the noncompliance and its cause, the period of noncompliance, including exact dates and times; and if the noncompliance has not been corrected, the anticipated time it is expected to continue; and steps taken or planned to reduce, eliminate, and prevent recurrence of the noncompliance.

For an anticipated incident or any planned changes or activities in the permitted control/treatment facility that may result in noncompliance with the permit requirements, the permittee shall submit written notice, if possible, at least ten days before the date of the event.

8. **Removed Substances:** Solids, sludges, debris, or other pollutants removed in the course of control/treatment of stormwater shall be utilized or disposed of in a manner acceptable to the Division.
9. **Right of Entry:** The permittee shall allow authorized representatives of the Division of Environment or the Environmental Protection Agency upon the presentation of credentials, to enter upon the permittee's premises where a stormwater discharge or source is located, or in which are located any records required by this permit, and at reasonable times, to have access to and copy any records required by this permit, to inspect any facilities, monitoring equipment or monitoring method required in this permit, and to sample any stormwater discharges from or influents into the stormwater control/treatment facilities.
10. **Transfer of Ownership:** The permittee shall notify the succeeding owner or controlling person of the existence of this permit by certified letter, a copy of which shall be forwarded to the Division. The succeeding owner shall secure a new permit. This permit is not transferable to any person except after notice and approval by the Director. The Director may require modification or revocation and reissuance of the permit to change the name of the permittee and incorporate such other requirements as may be necessary.
11. **Records Retention:** Unless otherwise specified, all records and information resulting from the monitoring activities required by this permit, including all records of analyses and calibration and maintenance of instruments and recordings from continuous monitoring instruments, shall be retained for a minimum of 3 years, or longer if requested by the Division.
12. **Availability of Records:** Except for data determined to be confidential under 33 USC Section 1318, all reports prepared in accordance with the terms of this permit shall be available for public inspection at the offices of the Department. Treated and raw stormwater data shall not be considered confidential. Knowingly making any false statement on any such report or tampering with equipment to falsify data may result in the imposition of criminal penalties as provided for in 33 USC Section 1319 and KSA 65-170c.
13. **Permit Modifications and Terminations:** As provided by KAR 28-16-62, after notice and opportunity for a hearing, this permit may be modified, suspended or revoked or terminated in whole or in part during its term for cause as provided, but not limited to those set forth in KAR 28-16-62 and KAR 28-16-28b through g. The permittee shall furnish to the Director, within a reasonable amount of time, any information which the Director may request to determine whether cause exists for modifying, revoking and reissuing, or terminating this permit or to determine compliance with this permit. The permittee shall also furnish upon request, copies of all records required to be kept by this permit. The filing of a request by the permittee for a permit modification, revocation and reissuance, or termination, or a notification of planned changes or anticipated noncompliance does not stay any permit condition.
14. **Administrative, Civil and Criminal Liability:** The permittee shall comply with all requirements of this permit. Nothing in this permit shall be construed to relieve the permittee from administrative, civil or criminal penalties for noncompliance as provided for in KSA 65-161 et seq., and 33 USC Section 1319.
15. **Oil and Hazardous Substance Liability:** Nothing in this permit shall be construed to preclude the institution of any legal action or relieve the permittee from any responsibilities, liabilities or penalties to which the permittee is or may be subject to under 33 USC Section 1321 or KSA 65-164 et seq. A permittee shall promptly notify the Division by telephone upon discovering crude oil or any petroleum derivative in its storm sewer system or stormwater control/treatment facilities.
16. **Property Rights:** The issuance of this permit does not convey any property rights in either real or personal property, or any exclusive privileges, nor does it authorize any injury to private property or any invasion of personal rights nor any infringements of or violation of federal, state or local laws or regulations.
17. **Severability:** The provisions of this permit are severable. If any provision of this permit or any circumstance is held invalid, the application of such provision to other circumstances and the remainder of the permit shall not be affected thereby.

18. Removal from Service: The permittee shall inform the Division at least three months before any control/treatment unit, or any other part of the control/treatment facility permitted by this permit is to be removed from service and shall make arrangements acceptable to the Division to decommission the facility or part of the facility being removed from service such that the public health and waters of the state are protected.
19. Duty to Reapply: A permit holder wishing to continue any activity regulated by this permit after the expiration date, must apply for a new permit at least 180 days prior to expiration of the permit.

**APPENDIX A:
Public Education and Outreach (P Ed & O) BMP Table**

APPENDIX A: Public Education and Outreach (P Ed & O) BMP Table

BMP Summary	Measurable Goal	Implementation Time Schedule	Points
<p>Lbmp P Ed & O - 01</p> <p>Maintain a stormwater webpage for the permittee.</p>	<p>Maintain the webpage with up to date information with all links effective and valid information. Check all links and update website as necessary on a minimum monthly basis. Document monthly checks in log book and indicate changes with logged summaries.</p>	<p>The webpage must be available throughout the year once it is posted and initially made available. In the initial year posted it must be available for a minimum of 3 months to qualify for the points. In subsequent calendar years the points may be claimed if the webpage has been maintained throughout the twelve months.</p>	<p>3 points may be claimed in the first year implemented, and 2 points may be claimed for each successive year the webpage is maintained available.</p>
<p>Lbmp P Ed & O - 02</p> <p>Distribute educational materials (either flyers, brochures, catalog mailings, handouts, or e-mails) addressing various pertinent stormwater public education topics.</p>	<p>Number of all flyers, brochures, catalog mailings, handouts, or e-mails distributed in a year shall equal or exceed the most recent U.S. Census Bureau decennial housing units value for the permit area. The applicable U.S. Census housing units value shall be documented, and the number of flyers, brochures, or e-mails distributed shall also be documented. This information and copies of the flyers, brochures, or e-mails shall be retained on file.</p>	<p>Either flyers, brochures, catalog mailings, handouts, or e-mails are to be distributed in at least two separate batches, ideally in separate seasons (either winter, spring, summer or fall). However, the required number of flyers, brochures, or e-mails must be distributed in a single calendar year and the points can be claimed for that year.</p>	<p>2 points may be claimed in a year in which the required number of flyers, brochures, catalog mailings, handouts, or e-mails are distributed.</p>
<p>Lbmp P Ed & O - 03</p> <p>Provide either training or educational materials to permittee identified businesses at high risk of contributing to stormwater pollution. Such businesses can</p>	<p>Training or educational materials must be provided, within the year, to at least five separate businesses if the population of the municipality is</p>	<p>The required amount of training or distribution of educational materials must occur within the year for which points are claimed.</p>	<p>2 points may be claimed in any year in which the required amount of training or distribution</p>

APPENDIX A: Public Education and Outreach (P Ed & O) BMP Table

<p>include, but are not limited to, food service, auto service, disaster response and janitorial services. The training or educational materials shall address best management practices they can employ to minimize or avoid adverse stormwater impacts due to their operations.</p>	<p>greater than 10,000, or three businesses if the population of the municipality is between 3,000 and 9,999, or two separate businesses if the population of the municipality is less than 3,000.</p> <p>There is no requirement to provide training to business in separate business categories, although it is allowed.</p>		<p>of educational material occurs.</p>
<p>Lbmp P Ed & O - 04</p> <p>Apply notification, placard, covers/hatches with message, or stencil, on stormwater inlets to provide a message similar to "No Dumping - Drains to River"</p>	<p>Apply this notification on at least 10% of all known stormwater inlets in the MS4.</p>	<p>The required number of placards, covers/hatches with message, or stencils must be placed within the year for which points are claimed. Alternately, points may be claimed in any subsequent year when an additional 5% of all known stormwater inlets in the MS4 bear the placard, covers/hatches with message, or stencil.</p>	<p>2 points may be claimed in years when the required number of inlets (10%) receive placards, covers/hatches with message, or stencils or in subsequent years when an additional 5% of all known stormwater inlets in the MS4 bear the message.</p>
<p>Lbmp P Ed & O - 05</p> <p>Post the municipality's MS4 permit and SMP document on either the stormwater web page or the municipal webpage.</p>	<p>The two documents must be posted for at least six months of the year to claim one point.</p>	<p>Months for which the posting occurs must be within the year for which points are claimed. No "carryover" of months from one year to the next.</p>	<p>1 point may be claimed for posting each year (minimum of at least six months).</p>
<p>Lbmp P Ed & O - 06</p> <p>Provide either a stormwater telephone hotline or web based or text message method for public reporting of illicit discharges.</p>	<p>Respond to all reported complaints within 10 days and, if found valid, resolve or establish a schedule for resolution within 20 days. Actual resolution may take</p>	<p>The hotline/reporting system must be available to the public for at least six months in the year to claim the points.</p>	<p>2 points may be claimed for each year the hotline / reporting system is maintained and available.</p>

APPENDIX A: Public Education and Outreach (P Ed & O) BMP Table

	<p>more than 20 days, but the schedule for resolution must be finalized and the efforts to implement resolution must begin within 20 days following receipt of complaint. Document complaints and response/resolution process for all complaints received in the year.</p> <p>Resolution of an illicit discharge can include, but is not limited to; elimination of the discharge; on-site treatment to allow discharge to the MS4 (normally requires an NPDES permit); redirecting the discharge to a location that the discharge is not considered illicit, i.e., sanitary sewer or to holding tanks to allow the waste to be hauled off for appropriate treatment, reuse/recycle or disposal.</p>		<p>An additional point may be claimed for each illicit discharge resolved in the year up to a limit of 2 additional points per year. One point allowed per illicit discharge resolved.</p>
<p>Lbmp P Ed & O - 07</p> <p>Provide educational material annually to at least four groups, including each of the following types: Residents, Businesses/Institutions, Commercial entities/Developers, and Industrial facilities. The educational material may be provided as any of the following:</p> <ul style="list-style-type: none"> ➤ Brochures ➤ Flyers ➤ E-mails ➤ Press release 	<p>Identify and educate at least 4 groups/entities from the listed types annually developing topics that are group specific and address activities and or pollutants of concern.</p>	<p>All the requirements for sending educational material to the various groups must occur in a single year to qualify for the points in that year.</p>	<p>3 points may be claimed each year this BMP is implemented in compliance with the specified requirements.</p>

APPENDIX A: Public Education and Outreach (P Ed & O) BMP Table

<p>Lbmp P Ed & O - 08</p> <p>Provide stormwater education for students at a school campus within K-12 (those grades present at the campus) within Johnson County. The training may be limited to the individual campus (local school buildings associated with a single address). This training does not need to be provided to the entire school system, e.g., USD.</p> <p>Alternately, funding stormwater BMP installations and/or field trips at the school campus will qualify.</p>	<p>Provide or fund an educator or speaker that will reach at least 5% of the K-12 students as normally attend school in the selected school campus.</p> <p>Alternately, the funding of BMPs at the school campus may provide for any of the following:</p> <ul style="list-style-type: none"> ➤ Installation of BMPs at the school ➤ stormwater related field trips ➤ water quality stream sampling activities ➤ construction of rain gardens on school property ➤ rain barrel workshops ➤ rain garden workshops 	<p>All of the required students (5% minimum) in K-12 at the selected campus must be educated in a single year to qualify for the points in that year.</p> <p>Alternately, stormwater BMPs may be funded at a school campus where students may participate in installation or observe operation of the BMPs. Any of the items listed under measurable goals qualify.</p>	<p>3 points may be claimed each year this BMP is implemented in compliance with the specified requirements (provide education and/or fund stormwater BMP installations at the school campus).</p>
<p>Lbmp P Ed & O - 09</p> <ol style="list-style-type: none"> 1. Operate an information booth at a large public event, (such as a sports event, fair, or music festival) where at least an estimated 1,000 or more individuals attend. 2. Alternately, operate an information booth at multiple public events, (such as a sports event, fair, or music festival) where a cumulative estimated total 	<p>Provide information about stormwater topics of current interest.</p>	<p>All events shall have the booth staffed by the permittee for at least 50% of the days the event occurs.</p>	<p>2 points may be claimed each year this BMP is implemented in compliance with the specified requirements for alternative 1. (1,000 or more attendees) or alternative 2. (3,000 attendees).</p> <p>Finally, 1 point may be claimed each year this BMP is implemented</p>

APPENDIX A: Public Education and Outreach (P Ed & O) BMP Table

<p>of 3,000 or more individuals attend.</p> <p>3. And finally, a single point can be claimed for operating an information booth at a public event where at least an estimated 200 or more individuals attend.</p>			<p>in compliance with the specified requirements for alternative 3 (200 attendees).</p>
<p>Libmp P Ed & O - 10</p> <p>Provide either training or educational materials to lawn/turf care service entities addressing best management practices they can employ to minimize or avoid adverse stormwater impacts due to their operations.</p>	<p>Training or educational materials must be provided, within the year, to at least five lawn/turf care service entities or at least 20% of the lawn care service entities located in the municipality whichever is least.</p>	<p>The required amount of training or distribution of educational materials must occur within the year for which points are claimed.</p>	<p>2 points may be claimed in any year in which the required amount of training or distribution of educational material occurs.</p>
<p>Libmp P Ed & O - 11</p> <p>Adopt a public education program to reduce littering.</p>	<p>Install and/or maintain signs to discourage littering. Signs are to be located in areas where littering has been a problem.</p>	<p>Credit can be claimed for any year in which signs are installed and in place for greater than six months or in any year in which previously installed signs remain posted for the full year.</p>	<p>1 point may be claimed for the year when signs are posted for six months or more, or 1 point may be claimed in subsequent years where the signs remain posted throughout the year.</p>
<p>Libmp P Ed & O - 12</p> <p>Create a stormwater information brochure to provide to the public at public meetings and/or hearings</p>	<p>Have multiple copies of the brochure available during at least 10 meetings or hearings open to the public during the year. Provide the brochures to the public at no charge.</p>	<p>The brochures shall address stormwater topics of concern.</p>	<p>1 point may be claimed in any year the brochures are made available at meetings and/or hearings as required.</p>

APPENDIX A: Public Education and Outreach (P Ed & O) BMP Table

<p>Lbmp P Ed & O - 13</p> <p>Operate an adopt a highway program to utilize public volunteers to clean road right-of-way.</p>	<p>The volunteers shall clean at least a two-mile segment of road either within the permit area or adjacent to the permit area. Alternately multiple spots (roadways, parks, and waterways) which are cleaned and equate to a two-mile road clean-up can qualify for a point.</p>	<p>The road right-of-way shall be cleaned at least once per year. Points may be claimed for any year in which cleaning has occurred.</p>	<p>1 point may be claimed in any year a two mile road segment is cleaned or alternately multiple spots are cleaned which equate to or exceed a two-mile road clean-up.</p>
<p>Lbmp P Ed & O - 14</p> <p>Hold a media campaign addressing various pertinent stormwater public education topics.</p>	<p>Estimated media exposure during prime-time broadcasting for the duration of the campaign shall be 10 times the most recent U.S. Census Bureau decennial population value for the permit area. The date, time, estimated media exposure, and population value for each spot broadcast shall be documented.</p>	<p>The media campaign shall be run within the year for which points are claimed. A new media campaign shall be run for each year points are claimed.</p>	<p>2 points may be claimed in a year in which the media campaign meeting the minimum exposure rate is conducted.</p>
<p>Lbmp P Ed & O - 15</p> <p>Develop or participate in an ongoing social media program on pertinent stormwater public education topics.</p>	<p>Publish or share social media content on the permittee's social media accounts at least six times per year. Record post topic, the number of impressions and engagement for each post. Include link to permittee's stormwater education website.</p>	<p>The required number of social media posts must occur within the year for which the posts are claimed.</p>	<p>2 points can be claimed in a year which the required number of content is shared</p>
<p>Lbmp P Ed & O - 16</p> <p>Operate an information booth at a public event or hold a public event which is intended to improve public understanding of issues related to water quality. The event may be associated with any environmental related</p>	<p>At least an estimated 800 or more individuals must attend the event.</p>	<p>The booth must be staffed at least 50% of the time the event is open to the public.</p>	<p>2 points may be claimed each year this BMP is implemented in compliance with the specified requirements.</p>

APPENDIX A: Public Education and Outreach (P Ed & O) BMP Table

<p>issue including but not limited to an environmental expo, earth day, world wetlands day, international day of action for rivers, world fish migration day, world biodiversity day, world oceans day, world cleanup day, world water monitoring day, world rivers day, and America recycles day.</p>			<p>Municipal staff from multiple permittees may staff the both and claim points, for their municipality, for this BMP if their staff meet the 50% of the time staffing requirement.</p>
<p>Libmp P Ed & O - 17</p> <p>Operate an adopt a street program to utilize public volunteers to clean street right-of-way.</p>	<p>The volunteers shall clean at least a two-mile segment of street, either a single street or multiple streets, either within the permit area or adjacent to the permit area.</p>	<p>The street right-of-way shall be cleaned at least once per year. Points may be claimed for any year in which cleaning has occurred.</p>	<p>1 point may be claimed in any year at least two miles of street right-of-way is cleaned by volunteers.</p>

APPENDIX B:
Public Involvement/Participation (P I/P) BMP Table

APPENDIX B:Public Involvement/Participation (P I/P) BMP Table

BMP Summary	Measurable Goal	Implementation Time Schedule	Points
<p>Lbmp P I/P - 01</p> <p>Hold a public hearing or public forum to notify the public about stormwater program activities and to solicit public comments regarding stormwater issues.</p>	<p>Provide public notice of the hearing/forum, invite local news media, either newspaper, radio, or TV, and document the hearing with attendance sign-in sheet and minutes of the hearing which include public comments and responses.</p>	<p>Retain copies of the notices to public, invitations to attend, attendance sign-in sheets, and minutes. Points may be claimed in year which hearing is held.</p>	<p>2 points may be claimed each year this BMP is implemented in compliance with the specified requirements.</p>
<p>Lbmp P I/P - 02</p> <p>Establish a citizens advisory committee.</p>	<p>Host the citizens advisory committee meetings twice yearly and receive comments and guidance from the committee regarding the SMP. Retain on file copies of the attendance list and minutes of the meetings.</p>	<p>The citizens advisory committee must hold at least two meetings in the year which points are claimed.</p>	<p>3 points may be claimed each year this BMP is implemented in compliance with the specified requirements.</p>
<p>Lbmp P I/P - 03</p> <p>Hold park or stream bank clean-up events for public volunteers to aid municipal staff in removing trash, debris, or pollutant sources from the selected clean-up area.</p>	<p>Clean an area which must be equal to or greater than one acre or alternately at least 200 yards of streambank.</p> <p>Alternately, for municipalities with less than 500 population clean an area which must be equal to or greater than a quarter of an acre or alternately at least 100 feet of streambank.</p>	<p>At least one such clean-up activity must occur in the year for which points are claimed.</p>	<p>3 points may be claimed each year this BMP is implemented in compliance with the specified requirements.</p>
<p>Lbmp P I/P - 04</p> <p>Train either citizen watch groups, homeowner associations (HOAs), or public service groups to recognize illicit discharge activities and communicate observations to appropriate municipal staff.</p>	<p>Provide training or distribute training materials to the group participants at least once annually.</p>	<p>At least one such training activity or distribution of training materials must be provided to the group in the year for which points are claimed.</p>	<p>2 points may be claimed each year this BMP is implemented in compliance with the specified requirements.</p>

APPENDIX B:Public Involvement/Participation (P I/P) BMP Table

<p>Libmp P I/P - 05</p> <p>Provide at least two events for residents to engage in cleanup activities and improve water quality within Johnson County.</p>	<p>Provide at least two events in streams, streamside parks, areas adjacent to public waterways, and/or other green infrastructure/water resources. These events can be any of the following: Environmental restoration events, stream cleanups, tree plantings, or stream monitoring.</p>	<p>At least two events in compliance with the stated goals must be conducted within the year for which points are claimed.</p>	<p>3 points may be claimed each year this BMP is implemented in compliance with the specified requirements.</p>
<p>Libmp P I/P - 06</p> <p>Establish a program to encourage residents to install stormwater treatment best management practices on their property.</p>	<p>Encouragement can include funding, grants, and other financial incentives, trainings and or giveaways. Stormwater treatment BMPs can include: rain barrels, rain gardens, native plantings, native trees, cisterns and vegetated swales. Record participation numbers annually.</p>	<p>One or more of the listed methods of encouragement must be implemented in the year for which points are claimed.</p>	<p>2 points may be claimed each year this BMP is implemented in compliance with the specified requirements, with the addition of 1 additional point (for a total of 3 points in the year) each year that participation increases from the previous year.</p>
<p>Libmp P I/P - 07</p> <p>Enact either an ordinance, a resolution, or other enforceable requirement that requires pet owners or their keepers to immediately and properly dispose of their pet's solid waste deposited at parks or rest areas owned by the permittee.</p>	<p>The ordinance or resolution or other enforceable measure shall be enacted, and signs posted informing the public of their obligation at the park. The installation of a pet waste bag dispenser in the public area qualifies as adequate signage.</p>	<p>In the year the Measurable Goal requirement is implemented the point may be claimed and for each year thereafter.</p>	<p>1 point may be claimed for the initial and subsequent year the Measurable Goal requirements remain in effect.</p>

APPENDIX B:Public Involvement/Participation (P I/P) BMP Table

<p>Lbmp P I/P - 08</p> <p>Provide a monetary donation to a scholarship fund for students pursuing a degree in an environmental program which would qualify them to work in a field which can result in water pollution control.</p>	<p>A \$500 contribution in a year is the minimum acceptable amount to achieve this goal.</p>	<p>The donation must be made in the year the points are claimed.</p>	<p>2 points may be claimed each year this BMP goal is achieved.</p>
<p>Lbmp P I/P - 09</p> <p>Distribute stormwater educational materials to the public within this permit area.</p> <p>Alternately, the permittee may provide stormwater educational materials, e.g. brochures, flyers, or pamphlets. These materials may address various stormwater topics. For this alternative these materials may be provided to other nearby municipalities in Johnson County for distribution to the public.</p>	<p>The educational materials, for each topic, which are distributed or supplied must have a value of at least \$50. Topics may be anything related to stormwater including but not limited to guidance on clean-up following flooding, discouraging littering, explaining and discouraging illicit discharges to the storm sewers, constructed BMPs for homeowners, area household hazardous waste receiving centers, and area recycling programs.</p>	<p>For educational materials distributed or provided to nearby municipalities each year points may be claimed when materials are provided with equal or greater value as required for each separate topic.</p>	<p>1 point may be claimed per topic addressed in compliance with the requirements, up to a total of 5 points/topics.</p>
<p>Lbmp P I/P - 10</p> <p>Establish a program to employ (either paid or unpaid) high school or college age environmental interns in an environmental related program including but not limited to either the wastewater utility, stormwater utility, potable water utility or solid waste utility in Johnson County.</p>	<p>The intern must receive the same environmental related training a new full-time employee would receive, within the first six months of the full-time employee's employment, during their internship.</p>	<p>The internship must last at least 8 weeks in the year when points are claimed.</p>	<p>2 points may be claimed each year this BMP goal is achieved per intern.</p>

**APPENDIX C:
Illicit Discharge Detection and Elimination (I D D & E) BMP Table**

APPENDIX C: Illicit Discharge Detection and Elimination (I D D & E) BMP Table

BMP Summary	Measurable Goal	Implementation Time Schedule	Points
<p>Libmp I D D & E - 01</p> <p>Hold a public hearing or public forum to educate the public about illicit discharges and alternate acceptable methods of disposal or reuse of substances and/or materials.</p>	<p>Provide public notice of the hearing/forum, invite local news media (either newspaper, radio or TV), and document the hearing with attendance sign-in sheet and minutes of the hearing which include questions/comments from the attendees and answers/comments from the permittee staff.</p>	<p>Retain copies of the notices to public, invitations to attend, attendance sign-in sheets, and minutes. Hearing must be held in year for which points are claimed.</p>	<p>2 points may be claimed for any year a hearing/forum is held.</p>
<p>Libmp I D D & E - 02</p> <p>Implement a program to abandon failed or failing residential or commercial on-site wastewater treatment facilities. These on-site wastewater treatment systems such as septic tank - lateral systems or lagoon systems are then connected to the municipal wastewater collection system for treatment of wastewater at the municipal wastewater treatment plant.</p> <p>Alternately, upgrade or replace the failed system to restore performance.</p>	<p>Redirect the wastewater generated by the facility to the municipal wastewater treatment collection system for proper treatment and disposal.</p> <p>Alternately, upgrade or replace the failed system with improvements which meet or exceed the present code or local requirements.</p>	<p>For each failed or failing on-site system which is abandoned, and the wastewater is redirected to the municipal wastewater treatment system, the permittee may claim points in the year the system is initially connected into the treatment system. Alternately, less points can be claimed in the year which are upgraded or replaced to restore adequate performance.</p>	<p>3 points may be claimed for each abandoned system in the year it is abandoned, alternately for systems which are upgraded or replaced as per the requirements a total of 2 points may be claimed in the year upgrade or replacement is completed.</p>
<p>Libmp I D D & E - 03</p> <p>Develop a spill response plan and, if appropriate, coordinate emergency response with other agencies or organizations.</p>	<p>The plan shall include, at a minimum, explanation of appropriate spill response activities for spills associated with vehicle accidents, at grade or above ground storage tanks, and vehicle fluids from mechanical equipment such as construction</p>	<p>The plan may be implemented in any year and points claimed for the initial implementation or for each year the plan remains effective.</p>	<p>3 points may be claimed in the year initially implemented, and 2 points may be claimed for each successive year the plan remains effective.</p>

APPENDIX C: Illicit Discharge Detection and Elimination (I D D & E) BMP Table

	equipment, cars, or trucks. The written plan shall be maintained on file.		
Lbmp I D D & E - 04			
Implement a program to evaluate MS4 outfalls to identify illicit discharges. Inspect at least 5% of the known MS4 outfalls during a calendar year and evaluate the ones which have dry weather discharges. Evaluate the water quality of the dry weather discharges to recognize non-stormwater contributions and trace the source of any illicit discharge.	When at least 5% of the known MS4 outfalls are inspected and for which at least one outfall was identified as discharging (entirely or partially) flow from an illicit discharge, the allotted points may be claimed in the year when the illicit discharge is eliminated. Document the MS4 outfalls inspected, the outfalls with dry weather discharges and the MS4 outfalls associated with illicit discharges.	The evaluation of a group of at least 5% of the known MS4 outfalls may be completed all in one year or may occur in up to two consecutive years and a point can be claimed. The larger number of points may be claimed only for the year in which the illicit discharge(s), associated with this group of evaluated outfalls is/are eliminated.	1 point may be claimed in the year when a 5% of the known MS4 outfalls are finally inspected, and 2 additional points may be claimed in which the illicit discharge(s), associated with this group of evaluated outfalls are eliminated.
Lbmp I D D & E - 05			
Distribute a letter (or flier) and/or e-mail along with a press release from a municipal official with the intent of reaching every resident and business in the MS4 permit area. The distributed documents shall provide information on how to avoid illicit discharges to the MS4, i.e., proper disposal methods for common substances or materials often discharged illicitly. Provide a link to the municipal website where applicable ordinances and disposal guidance are posted.	The letter (or flier) and/or e-mail along with the press release shall highlight the requirements for proper disposal of wastes and disposal methods. Copies of these documents shall be retained on file along with the distribution/ mailing lists to document distribution to the target area (minimum MS4 permit area) to avoid illicit discharges to the MS4. Provide a link to the municipal website where applicable ordinances and disposal guidance are posted.	The distribution of these various documents, letter (or flier) and/or e-mail along with the press release, shall all occur in the same month. Permittee may claim these points in the year these documents are distributed.	2 points
Lbmp I D D & E - 06			
Inspect, by televising pipelines or direct visualization of open channel drainage, 2% of	Generate a summary report of the inspection including the number of linear	The inspection process can occur in a single calendar year or	3 points may be claimed for inspection of

APPENDIX C: Illicit Discharge Detection and Elimination (I D D & E) BMP Table

<p>the MS4 system within the permit area all conducted within a 12-month period to aid in identifying illicit discharges as well as evaluate the condition of the storm sewer lines/drainage channels-ditches. If in a 12-month period 10% of the MS4 system is inspected a higher point value may be claimed.</p>	<p>feet televised, number of linear feet visually inspected, condition comments, illicit discharges identified and the results of efforts to eliminate illicit discharges, e.g., discharge line disconnected and redirected to the sanitary sewer or discharge practice terminated.</p>	<p>may be conducted over a period extending from one year into the succeeding year. Points may be claimed in the year when the televised and/or visual inspection of this portion of the MS4 system (either 2% or 10%) is completed.</p>	<p>2% of the MS4 system, alternately if 10% of the MS4 system is inspected 5 points may be claimed.</p>
<p>Libmp I D D & E - 07</p> <p>Implement a Household Hazardous Waste Collection Program (HHWCP) or document others have implemented such a program to provide such service to all property owners or residents located within the permit area.</p>	<p>Document the residents and property owners within the MS4 permit area were able to dispose of such wastes at the HHWCP during a calendar year. Retain this documentation on file.</p>	<p>The property owners or residents located within the permit area must be able to dispose of waste accepted by the HHWCP throughout a calendar year. Points may be claimed for any such year.</p>	<p>3 points may be claimed for any year in which this BMP was implemented in compliance with the requirements.</p>
<p>Libmp I D D & E - 08</p> <p>Implement a program to increase the reliability of sanitary sewer pump stations above the minimum standard design requirements.</p>	<p>An upgraded pump station shall include the following:</p> <ul style="list-style-type: none"> ➤ A dedicated on-site standby generator shall be installed (with automatic transfer switch) for use when main line power fails. ➤ A dialer system, or telemetry system, or connection to a SCADA system shall be installed to provide real time or nearly real time notification of failures at the pump station which 	<p>In the year all improvements, as listed under measurable goals, are installed and ready for operation the points may be initially claimed and in subsequent years these improvements remain operational points may be claimed.</p>	<p>5 points may be claimed (for each pump station upgraded in compliance with this BMP) in the first year the improvements, as listed under measurable goals, are installed and ready for operation,</p> <p>4 points may be claimed for (for each pump station upgraded in compliance with this BMP) each successive year the improvements, as listed</p>

APPENDIX C: Illicit Discharge Detection and Elimination (I D D & E) BMP Table

	<p>can potentially lead to sanitary sewer overflow.</p> <ul style="list-style-type: none"> ➤ The permittee shall purchase and maintain for immediate operation a trailer mounted motor driven sewage pump for use when the pump station fails to operate. The motor driven pump shall be sized to pump at a rate at least equal to the firm pumping capacity of any sanitary sewer pump station the permittee claims points for under this BMP. ➤ The pump station shall be modified to facilitate the connection of the trailer mounted pump discharge to the force main and convenient installation of the suction line from the trailer mounted pump into the wet well. 		<p>under measurable goals, remain operational.</p>
<p>Libmp I D D & E - 09</p> <p>Provide a contribution to area recycle programs or programs (such as household hazardous waste disposal facilities, e-cycle facilities, paper shred facilities, pharmaceutical disposal facilities etc.) designed to properly</p>	<p>The contributions may be made to programs which take tires, automotive fluids, batteries, or other wastes for which there is any documentation such wastes have been discarded as addressed under the</p>	<p>The total value of donation (either in-kind work, materials, supplies or cash) in a minimum amount of \$500 must be made in the year points are claimed.</p>	<p>2 points may be claimed each year this BMP goal is achieved.</p>

APPENDIX C: Illicit Discharge Detection and Elimination (I D D & E) BMP Table

<p>dispose of types of waste or materials which have previously been discarded to or adjacent to either the MS4, streams, or lakes within or adjacent to the permittee's permit area. The area program must be within 30 miles from this permit area.</p>	<p>BMP summary. The contributions must total a minimum of \$500 in the year (\$100 for alternative lower population municipalities) which points are claimed. The contributions can be monetary or can be in the form of goods and/or services with an agreed specified value. Contributions may be made to area household hazardous waste programs, private recycle/reuse facilities or civic/volunteer organizations assisting in recycle.</p>	<p>Alternatively, for municipalities with less than 500 population the total value of donation in a minimum amount of \$100 must be made in the year points are claimed.</p>	
<p>Lbmp I D D & E - 10</p> <p>Inspect, 5% of the MS4 system Stormwater inlets and/or outfalls within the permit area all conducted within a 12-month period to aid in identifying illicit discharges. If in a 12-month period 15% of the MS4 system inlets and/or outfalls are inspected a higher point value may be claimed in the year the required percentage of inspections are completed.</p>	<p>Generate a summary report of the inspection including the number of inlets and/or outfalls visually inspected, condition comments, illicit discharges identified and the results of efforts to eliminate illicit discharges, e.g., discharge line disconnected and redirected to the sanitary sewer or discharge practice terminated.</p>	<p>The inspection process can occur in a single calendar year or may be conducted over a period extending from one year into the succeeding year. Points may be claimed in the year when the televised and/or visual inspection of this portion of the MS4 system (either 2% or 15%) is completed.</p>	<p>3 points may be claimed for inspection of 2% of the MS4 system in the year the required percentage of inlets and/or outfalls are finally inspected, alternately if 15% of the MS4 system is inspected 5 points may be claimed.</p>

**APPENDIX D:
Construction Site Stormwater Runoff Controls (C S S R C) BMP Table**

APPENDIX D: Construction Site Stormwater Runoff Controls (C S S R C) BMP Table

BMP Summary	Measurable Goal	Implementation Time Schedule	Points
<p>Lbmp C S S R C - 01</p> <p>Implement a requirement for a Soil Erosion and Sediment Control (SESC) Plan for any land Disturbance sites which are either equal to or greater than 1 acre or for which there is construction activity disturbing less than one acre which is part of a larger common plan of development or sale that in total disturbs one acre or more.</p>	<p>Enact a regulatory ordinance, or other enforceable measure that requires an SESC Plan for all developments disturbing sites equal to or greater than 1 acre or for construction activity disturbing less than one acre which is part of a larger common plan of development or sale that in total disturbs one acre or more.</p>	<p>Points may be claimed in the year the ordinance/enforceable requirement first becomes effective, and for each full calendar year thereafter for which the ordinance/enforceable requirement remains effective.</p>	<p>3 points may be claimed in the year the ordinance initially becomes effective, and 2 points may be claimed for each successive year thereafter for which the ordinance remains effective.</p>
<p>Lbmp C S S R C - 02</p> <p>Develop and adopt a design manual for erosion and sediment control BMPs which are required to be used on sites disturbing sites equal to or greater than 1 acre or for construction activity disturbing less than one acre which is part of a larger common plan of development or sale that in total disturbs one acre or more.</p>	<p>Require implementation of BMPs in compliance with the design manual on all sites which meet the disturbed area standard as specified in the BMP Summary.</p>	<p>Points may be claimed for the year which the manual is initially adopted and implemented, and a reduced number of points may be claimed for subsequent years in which the manual remains implemented.</p>	<p>3 points may be claimed in the year the manual is initially implemented, and 2 points may be claimed for each successive year the manual remains effective.</p>
<p>Lbmp C S S R C - 03</p> <p>Provide access to at least one training class for contractors, developers or others involved with land disturbance projects which provides training on requirements for a Stormwater Pollution Prevention Plan (SWP2 Plan) and implementation of appropriate BMPs.</p>	<p>This training class must address all local requirements for a SWP2 Plan, requirements for implementation of BMPs and address the requirements for permits.</p>	<p>Points may be claimed for the year in which the training class is held.</p>	<p>3 points</p>
<p>Lbmp C S S R C - 04</p> <p>Develop a site plan review process which considers potential water quality impacts which may occur during construction as well as</p>	<p>Review process must have written guidance for the reviewer. Issuance of a building permit or approval to start construction may not</p>	<p>Points may be claimed in the year the review process is initially developed and implemented. Also points may be</p>	<p>3 points may be claimed in the year the review process is initially developed and</p>

APPENDIX D: Construction Site Stormwater Runoff Controls (C S S R C) BMP Table

<p>post construction impacts.</p>	<p>be provided until the site plan has successfully passed the review process either based on the initial site plan submittal or has been modified to comply with requirements identified during the review process. Measures must be included to enforce the installation of water quality BMPs included in the site plan.</p>	<p>claimed in each subsequent year the review process continues to be implemented.</p>	<p>implemented, 2 points may be claimed for each successive year the review process continues to be implemented.</p>
<p>Lbmp C S S R C - 05</p> <p>Establish effective requirements for construction sites to control wastes. Develop through ordinance or other enforceable means requirements for construction site Operators or owners. At a minimum control shall be imposed to prevent entry into the MS4 for the following wastes:</p> <ul style="list-style-type: none"> ➤ discarded building materials ➤ concrete ➤ Truck washout chemicals ➤ litter, and ➤ sanitary waste 	<p>Enact ordinance or other effective means to achieve control of wastes at construction sites.</p>	<p>Points may be claimed in the year of enactment. Also points may be claimed in each subsequent year the method of effective control of construction site waste remains in effect.</p>	<p>3 points may be claimed in the year of enactment, 2 points may be claimed for each successive year the method of effective control of construction site waste remains in effect.</p>
<p>Lbmp C S S R C - 06</p> <p>Develop written procedures for inspection of construction sites. Develop a Stormwater Construction Site Inspection Guide for use by municipal inspectors.</p>	<p>The procedures document must address the administrative aspects associated with required inspections of construction sites, the issuance of inspection reports, notices of violations, and enforcement actions. The Inspection Guide must provide inspectors guidance on how to conduct a construction site stormwater inspection, the</p>	<p>Development of the written procedures and the Inspection Guide can occur in any year. Initial implementation can allow points to be claimed in that year and continued implementation can allow points to be claimed in subsequent years.</p>	<p>3 points may be claimed in the year of initial development, 2 points may be claimed for each successive year the written procedures and inspection guide continue to be utilized.</p>

APPENDIX D: Construction Site Stormwater Runoff Controls (C S S R C) BMP Table

	<p>required procedures, and guidance on acceptable conditions of various BMPs employed on such sites, enforcement actions and/or reference of cases for enforcement by other municipal staff, guidance on photo log of the inspection and inspection checklists for use by the inspector.</p>		
<p>Libmp C S S R C - 07</p> <p>Acquire or develop a software tracking system to track inspections and related tasks.</p>	<p>The tracking system must allow for scheduling and follow-up activities such as re-inspections, mailing notices or reports, etc.</p>	<p>A point can be claimed in each year the software tracking system is utilized.</p>	<p>1 point may be claimed for each year the software is utilized.</p>

**APPENDIX E:
Post-Construction Stormwater Management in New Development
and Redevelopment Projects (P-C S M) BMP Table**

**APPENDIX E: Post-Construction Stormwater Management in New Development
and Redevelopment Projects (P-C S M) BMP Table**

BMP Summary	Measurable Goal	Implementation Time Schedule	Points
<p>Lbmp P-C S M - 01</p> <p>Develop and adopt a custom design manual for Post-Construction Stormwater Management which specifies various structural BMPs which are required for new development and re-development construction sites which are greater than 1 acre or for which there is construction activity disturbing less than one acre which is part of a larger common plan of development or sale that in total disturbs one acre or more.</p> <p>Alternately, adopt and implement the APWA 5600 Stormwater Design Criteria and the MARC/APWA BMP Manual.</p>	<p>The custom design manual shall impose requirements to achieve at least one of the following standards:</p> <ul style="list-style-type: none"> ➤ Capture, at least, the first 0.5 inches of precipitation on the development/re-development site and utilize methods to prevent discharge off-site, including but not limited to: <ul style="list-style-type: none"> • retain on-site • infiltrate • evaporate • transpire or • beneficially reuse ➤ Through implementation of appropriate BMP(s) reduce the peak stormwater flow rate to a value equal to or less than the rate which would be experienced on the site prior to the development/re-development project based upon modeling a standard storm event, e.g. 1.0 inch - 6-hour event assuming saturated soil conditions. ➤ Other sizing or detention standards 	<p>Development of the design manual can occur in any year. Initial implementation can allow points to be claimed in that year and continued implementation can allow points to be claimed in subsequent years.</p>	<p>4 points may be claimed in the year of initial implementation of a custom design manual -alternately 6 points may be claimed in the year of initial implementation of the APWA 5600 stormwater design criteria and the MARC/APWA BMP Manual,</p> <p>3 points may be claimed for each successive year compliance with the custom design manual is implemented</p> <p>Alternately 5 points may be claimed in each successive year the implementation of the APWA 5600 stormwater design criteria and the MARC/APWA BMP Manual is implemented.</p>

APPENDIX E: Post-Construction Stormwater Management in New Development and Redevelopment Projects (P-C S M) BMP Table

	<p>generally accepted by design engineers as adequate for the permittee's local.</p> <p>As an alternative to a custom design manual the APWA 5600 Stormwater Design Criteria and the MARC/APWA BMP Manual may be adopted and implemented. Measures must be included to enforce the installation of the various structural BMPs required.</p>		
<p>Lbmp P-C S M - 02</p> <p>Develop a list of post-construction structural or non-structural BMPs which are required to be incorporated in any development/re-development project. The list must include guidance regarding the BMPs which must be incorporated in various projects as determined appropriate by the permittee. The list is to be provided to entities involved with the design of projects prior to site plan review by the permittee.</p>	<p>Development and implementation of the list and guidance is necessary to claim points in the first year. The list of required BMPs must be enforceable through ordinance or other means.</p>	<p>Development of the list and guidance can occur in any year. Initial implementation can allow points to be claimed in that year and continued implementation can allow points to be claimed in subsequent years.</p>	<p>3 points may be claimed in the year of initial implementation, 2 points may be claimed for each successive year the list is maintained and implemented.</p>
<p>Lbmp P-C S M - 03</p> <p>Develop and implement a program to ensure adequate long-term cleaning, operation and maintenance of all municipally owned or operated post-construction structural stormwater BMP facilities. The program shall address several different types of these BMP systems. The systems, which are addressed, shall</p>	<p>The program shall be detailed in a written document and made available to all pertinent maintenance staff.</p>	<p>Development of the program can occur in any year. Initial implementation can allow points to be claimed in that year and continued implementation can allow points to be claimed in subsequent years.</p>	<p>3 points may be claimed in the year of initial implementation, 2 points may be claimed for each successive year the program is maintained and utilized.</p>

APPENDIX E: Post-Construction Stormwater Management in New Development and Redevelopment Projects (P-C S M) BMP Table

<p>include any type of post-construction structural BMP system, contained in the MS4. These shall include, if so present, at a minimum the following: detention ponds retention ponds grass swales pervious paving systems wetlands vegetative filter strips manufactured stormwater treatment devices (swirl separators, screens, etc.) drop inlet-catch basin</p>			
<p>Lbmp P-C S M - 04</p> <p>Develop a master plan or comprehensive development plan which establishes zoning and development standards with establishment of both structural and non-structural BMPs intended to avoid or minimize adverse water quality impacts post-construction.</p>	<p>Runoff problems can be addressed efficiently with sound planning procedures. This master or comprehensive development plan must include, a zoning ordinance, a stream buffer ordinance, site plan development requirements which include minimizing the increase of impervious surfaces and maximization/preservation of open space. The plan must also impose requirements for new development or re-development projects to utilize stormwater retention or detention BMPs and vegetative BMPs (such as grassy swales, filter strips, artificial wetlands, and rain gardens).</p>	<p>After <u>all</u> aspects are implemented including final implementation of the master or comprehensive development plan, along with enactment of the required ordinances points for implementation of this BMP can initially be claimed.</p>	<p>5 points may be claimed in the year all aspects are initially implemented, 2 points may be claimed for each successive year all aspects continue to be implemented.</p>
<p>Lbmp P-C S M - 05</p> <p>Develop and implement a program for inspection of permittee owned structural BMPs which includes implementation of needed maintenance</p>	<p>The program shall require inspection of at least 10% of the structural BMPs on an annual basis.</p>	<p>The program shall be developed and implemented within a single year.</p>	<p>3 points may be claimed in the year the program is initially developed and implemented,</p>

APPENDIX E: Post-Construction Stormwater Management in New Development and Redevelopment Projects (P-C S M) BMP Table

<p>to ensure long-term operation of the BMPs</p>	<p>Identified maintenance activities shall be completed:</p> <ol style="list-style-type: none"> 1. in the same year of inspection or 2. completed as dictated by the permittee's maintenance/O&M plan 3. or a written plan for completion of the necessary maintenance shall be completed in the same year of inspection with the objective for completion of the maintenance activity within 18 months. 		<p>2 points may be claimed for each successive year the program continues to be implemented.</p>
<p>Lbmp P-C S M - 06</p> <p>Develop and implement a program for inspection of known privately owned structural BMPs which includes providing the owner of the BMPs an inspection report which specifies needed maintenance to ensure long-term operation of the BMPs.</p>	<p>The program shall require inspection of at least 10% of the known privately owned structural BMPs on an annual basis.</p> <p>Identified maintenance activities shall be completed in the same year of inspection or a written plan for completion of the necessary maintenance shall be completed in the same year of inspection with the objective for completion of the maintenance activity within 18 months.</p>	<p>The program shall be developed and implemented within a single year.</p>	<p>3 points may be claimed in the year the program is initially developed and implemented, 2 points may be claimed for each successive year the program continues to be implemented.</p>
<p>Lbmp P-C S M - 07</p> <p>Enact either an ordinance, a resolution, or other</p>	<p>The ordinance or resolution or other enforceable</p>	<p>The year the ordinance or resolution or other</p>	<p>3 points may be claimed in the year of</p>

**APPENDIX E: Post-Construction Stormwater Management in New Development
and Redevelopment Projects (P-C S M) BMP Table**

<p>enforceable requirement which requires the installation of pervious surfaces on property.</p>	<p>requirement must specify when installation of impervious surfaces is not acceptable and what allowable pervious surfaces can be installed in lieu of impervious surfaces.</p>	<p>enforceable requirement is implemented points may be claimed and continued implementation can allow points to be claimed in subsequent years.</p>	<p>initial implementation, 2 points may be claimed for each successive year the ordinance or resolution or other enforceable requirement is implemented.</p>
<p>Lbmp P-C S M - 08</p> <p>Implement a program to encourage residential owners to install stormwater BMPs, including but not limited to, native trees, native flower gardens, rain gardens, rain barrels, pervious surfaces, and vegetated swales.</p>	<p>A program which results in installation of such BMPs on 1% of the residential parcels in a year will allow two points to be claimed for that year. In a year when installation of such BMPs on 5% of the residential parcels occurs, a larger number of points may be claimed.</p>	<p>The number of residential parcels improved to qualify for points must occur in a single calendar year.</p>	<p>2 points may be claimed in a year BMPs are installed on 1% of the residential parcels, 4 points may be claimed in a year BMPs are installed on 5% of the residential parcels.</p>

**APPENDIX F:
Pollution Prevention/Good Housekeeping for Municipal Operations (P P/G H) BMP Table**

APPENDIX F: Pollution Prevention/Good Housekeeping for Municipal Operations (P P/G H) BMP Table

BMP Summary	Measurable Goal	Implementation Time Schedule	Points
<p>Lbmp P P/G H - 01</p> <p>Install a screening device or method at a single municipal storm sewer outfall or on the storm sewer line immediately upstream of the outfall to reduce the discharge of floatables or other objects to receiving waters.</p>	<p>The screening device or method is required to remove objects that exceed at least 1½ inches in size. The device or method must be capable of continuous operation during stormwater discharges.</p> <p>An emergency bypass or overflow line can be included to avoid surcharging/flooding in the event the screening device or method fails to operate properly at any time.</p> <p>A log of the material captured and prevented from discharge to the receiving water shall be maintained.</p>	<p>Volume or weight of the material shall be documented for either each discharge event or on a quarterly basis.</p>	<p>3 points may be claimed in the year the screening device or method is initially implemented, 2 points may be claimed for each successive year the screening device or method continues to be implemented.</p>
<p>Lbmp P P/G H - 02</p> <p>Implement a recycle and proper waste disposal program for municipal staff to reduce potential for litter, to recycle waste oil, batteries, glass containers, plastic containers, and paper products.</p>	<p>A log of the materials directed to recycle shall be maintained. Entries in the log shall record either weight or volume of recycle materials removed from the containers and transported to the recycle facility as well as the date of transport.</p>	<p>Recycle containers shall be available for staff use all days of the year in which points are claimed.</p>	<p>3 points may be claimed in the initial year the recycle program is implemented, 2 points may be claimed for each year the recycle program continues to be implemented.</p>
<p>Lbmp P P/G H - 03</p> <p>Develop a guidance document for municipal staff or third-party contractors which apply pesticides. The guidance shall require municipal staff who apply restricted use pesticides to have a commercial applicator</p>	<p>Require staff which apply pesticides to use such pesticides in compliance with the guidance document. The guidance document must require use of pesticides in</p>	<p>The guidance document must be finalized and implemented in the year which points are initially claimed.</p>	<p>2 points may be claimed in the year the guidance document is initially implemented, 1 point may be claimed for each</p>

APPENDIX F: Pollution Prevention/Good Housekeeping for Municipal Operations (P P/G H) BMP Table

<p>certification from the Kansas Department of Agriculture if required by that Department.</p>	<p>compliance with the label instructions.</p>		<p>successive year the guidance document continues to be implemented.</p>
<p>Lbmp P P/G H - 04</p> <p>Implement a program, with guidance to municipal staff or third-party contractors, to ensure any municipal vehicle or other mechanical equipment washing is conducted in a manner which ensures the wash water is disposed of in the sanitary sewer or otherwise receives proper treatment prior to discharge to the environment.</p>	<p>Maintain proper wash facilities for municipal staff to wash vehicles and/or equipment or implement a program which includes guidance to municipal staff to take vehicles and/or equipment to commercial wash facilities, either of which ensures the wash water is conveyed to the sanitary sewer, or otherwise receives proper treatment prior to discharge to the environment, and not discharged untreated to the MS4 or directly to the environment.</p>	<p>The guidance document must be finalized and implemented in the year which points are initially claimed.</p>	<p>2 points may be claimed in the year the guidance document is finalized and implemented, 1 point may be claimed for each successive year the guidance document continues to be implemented.</p>
<p>Lbmp P P/G H - 05</p> <p>Implement a program for street sweeping in which the street sweepings are collected and disposed of properly or recycled/reused if possible.</p>	<p>All paved streets which can be swept shall be listed in the schedule for street sweeping. A log shall be maintained listing the street segments which are swept and, dates of sweeping and where the street sweepings are disposed or where the material was sent to be recycled and/or reused.</p> <p>Alternatively, for municipalities with less than 500 population street sweeping can be limited to sweeping the gutters. The log which must be maintained need only</p>	<p>At least 10% of the streets which are listed in the street sweeping schedule must be swept at least once in a year to claim points for the year.</p> <p>In years when street sweeping equipment is purchased for use by the permittee additional points may be claimed.</p> <p>Alternately, for municipalities with less than 500 population at least 5% of the street gutters which can be swept must be swept in a year to</p>	<p>3 points may be claimed in the year at least 10% of the listed streets are swept and street sweeping equipment is purchased, 2 points may be claimed for each year at least 10% of the listed streets are swept or alternately for municipalities with less than 500 population if at least 5% of the street gutters which</p>

APPENDIX F: Pollution Prevention/Good Housekeeping for Municipal Operations (P P/G H) BMP Table

	<p>indicate the street segments which were swept in the year and confirm the sweepings were properly disposed or recycled and/or reused</p>	<p>claim points for the year.</p>	<p>can be swept are swept in a year 2 points may be claimed.</p>
<p>Lbmp P P/G H - 06</p> <p>Develop an employee training program to ensure permittee's staff understand what actions they can take in the workplace to minimize stormwater pollution.</p>	<p>Provide guidance documents in the form of either fact sheets, flyers or e-mails to staff to coach them in appropriate actions they can take while working to minimize stormwater pollution.</p> <p>Alternately, provide in-person training or videos with sign-in-sheets for signature documentation of personal or video training.</p> <p>Retain copies of the guidance documents and/or sign-in-sheets. A log of when the guidance was distributed, or training was provided to staff should be maintained.</p> <p>Provide appropriate guidance and/or training to staff a minimum of twice per year.</p>	<p>For each year in which staff receive guidance documents or in-person training or video training on two separate dates, points may be claimed for the year.</p>	<p>In years when guidance documents or training (in-person or video) are provided on two separate dates 1 point may be claimed.</p>
<p>Lbmp P P/G H - 07</p> <p>Implement a program to inspect stormwater inlets to identify illicit discharges and clean drop inlets of accumulated debris.</p>	<p>Inspect at least 5% of all inlets annually.</p> <p>Additionally, if 10% of all inlets are inspected in a year an additional point may be claimed.</p> <p>For any inlets which have evidence of dumped paint, oil or other substances which are considered illicit discharges follow up with</p>	<p>For each year in which staff inspect at least 5% of all stormwater inlets at least one point may be claimed.</p>	<p>In years when staff inspect at least 5% of all stormwater inlets and remove accumulated debris 1 point may be claimed.</p> <p>In years when staff inspect at least 10% of all stormwater inlets and remove</p>

APPENDIX F: Pollution Prevention/Good Housekeeping for Municipal Operations (P P/G H) BMP Table

	<p>efforts to educate individuals near the impacted inlet about illicit discharges.</p> <p>For inlets which have any accumulation of debris, remove the debris for proper disposal.</p>		<p>accumulated debris 2 points may be claimed.</p>
<p>Lbmp P P/G H - 08</p> <p>Make updated online storm sewer map accessible to the public.</p>	<p>Map shall cover the entire MS4 within the permit area and include all the MS4 lines both pipe and open drainage (i.e. ditches) and shall also illustrate all impaired waterways (i.e. 303(d) listed and TMDL listed streams/rivers) with an indication of the listed impairment.</p>	<p>For each year in which the map is posted online points may be claimed. In the first year the map is posted it must be posted for at least six months for points to be claimed.</p>	<p>3 points may be claimed in the first year, 2 points may be claimed for each year thereafter for which the map remains posted.</p>
<p>Lbmp P P/G H - 09</p> <p>Identify permittee owned facilities, open space and buildings that can be retrofitted for stormwater BMPs.</p>	<p>Retrofit projects can include: green infrastructure, catchment improvements, Pollutant of Concern targeted BMPs, and native plant restoration projects.</p>	<p>The site(s) must be retrofitted with stormwater BMPs as listed in the measurable goals. Points can be awarded in the first year the BMPs are installed and begin operation and points may be claimed for each year the retrofitted BMPs continue to be operated.</p>	<p>1 point may be claimed in the first year for each site retrofitted (up to two sites/points maximum, 2 points may be claimed for each year at least two sites continue to operate all of the retrofitted BMPs which were installed.</p>
<p>Lbmp P P/G H - 10</p> <p>Install and operate a constructed wetland at a municipal facility such as at a parking lot, shop, maintenance facility, rest area or any other industrial/commercial type facility, e.g. recycling facility, transfer station, kennel, or airport.</p>	<p>The wetland shall include a water surface area of at least 1/4 acre or equivalent submerged surface area for submerged wetlands.</p>	<p>Points may be claimed in the year the wetland is constructed and in subsequent years the wetland remains in operation.</p>	<p>2 points may be claimed for the year in which the wetland is constructed, 1 point may be claimed for each subsequent year the wetland remains in operation.</p>

APPENDIX F: Pollution Prevention/Good Housekeeping for Municipal Operations (P P/G H) BMP Table

<p>Lbmp P P/G H - 11</p> <p>Install a canopy or other covered area for load-out of salt or other de-icing chemicals where such de-icing materials are stored either within the permit area or a storage facility located within 30 miles of this permit area. The canopy or other covered area for load-out of salt or other de-icing materials may be installed at a facility owned by the permittee or at a facility owned by an entity the permittee contracts with as long as the facility is located within 30 miles of this permit area.</p>	<p>The canopy or covered area shall be large enough to allow normal load-out and cleanup of spilled de-icing materials, without mixing with precipitation and resulting in contaminated runoff from the site, during and immediately following load out operations</p>	<p>Points may be claimed in the initial year of construction and in subsequent years the canopy/covered area remains in operation.</p>	<p>3 points may be claimed for the year in which the canopy/covered area is constructed, 2 points may be claimed for each subsequent year the canopy/covered area remains in operation.</p>
<p>Lbmp P P/G H - 12</p> <p>Install a stormwater treatment system for capture of either trash, sediment, or debris. Systems may include any proprietary stormwater treatment system including CDS, Hancor, Enviro 21, etc. or similar custom designed systems. A system can be installed at a single municipal storm sewer outfall or on the storm sewer line immediately upstream of the outfall to reduce the discharge of floatables or other objects to receiving waters. Alternately, a system may be installed on a stormwater line to provide treatment at problem locations.</p>	<p>The treatment system or method must be capable of continuous operation during stormwater discharges.</p> <p>An emergency bypass or overflow line can be included to avoid surcharging/flooding in the event the system is overloaded or fails to operate properly at any time.</p> <p>A log of the material (noting either volume or weight) captured and prevented from discharge to the receiving water shall be maintained.</p>	<p>Volume or weight of the material shall be documented for either each discharge event, on a quarterly basis or at least annually.</p>	<p>3 points may be claimed in the year the treatment system is initially implemented, 2 points may be claimed for each successive year the treatment system continues to be implemented.</p>

**APPENDIX G:
Total Maximum Daily Load (TMDL) BMP Table**

APPENDIX G: Total Maximum Daily Load (TMDL) BMP Table

BMP Summary	Measurable Goal	Implementation Time Schedule etc.	Points
<p>Lbmp T M D L - 01</p> <p>Install pet waste stations which include a glove/bag dispenser with signage and waste can to encourage pet waste disposal at either parks, trails, rest areas or other public lands owned by the permittee.</p>	<p>At least one pet waste station shall be installed at the selected park, trail, rest area or other public land. The station(s) shall include signage which encourages proper pet waste disposal/cleanup and a waste can.</p>	<p>In the year the Measurable Goal requirement is implemented the point may be claimed and for each year thereafter the pet waste stations remain in use.</p>	<p>1 point may be claimed for the year in which the Measurable Goal requirements are enacted, and 1 point may be claimed for each subsequent year the Measurable Goal requirements remain in effect.</p>
<p>Lbmp T M D L - 02</p> <p>Establish a program to encourage installation of residential rain gardens.</p>	<p>Provide public education on rain gardens and design guidance for the installation of residential rain gardens. The rain gardens must have a minimum area of 20 square feet. The installation of rain gardens on five various residential parcels shall qualify the permittee to claim points for this BMP.</p>	<p>In the year five or more residential rain gardens are finally constructed and become operational the points may be initially claimed and in subsequent years when at least five residential rain gardens remain operational points may be claimed.</p>	<p>3 points may be claimed for the year in which five or more residential parcels install rain gardens and initiate operation, 2 points may be claimed for each subsequent year at least five or more residential parcels have rain gardens remain in operation.</p>
<p>Lbmp T M D L - 03</p> <p>Install and operate a constructed wetland.</p>	<p>The wetland shall include a water surface area of at least one acre or equivalent submerged surface area for submerged wetlands.</p>	<p>Points may be claimed in the year the wetland is constructed and in subsequent years the wetland remains in operation.</p>	<p>3 points may be claimed for the year the wetland is constructed, 2 points may be claimed for each subsequent year the wetland remains in operation.</p>

APPENDIX G: Total Maximum Daily Load (TMDL) BMP Table

<p>Lbmp T M D L - 04</p> <p>Enact a stream buffer ordinance, resolution, or other enforceable requirement to impose stream buffer standards.</p>	<p>The enactment of stream buffer standards must include enforcement capability. Consider use of the EPA stream buffer model ordinance or similar such requirement.</p>	<p>The year the ordinance, resolution or other enforceable requirement is enacted points may be claimed. Also points may be claimed for subsequent years the ordinance, resolution or other enforceable requirement remains in effect.</p>	<p>3 points may be claimed for the year in which the ordinance, resolution or other enforceable requirement is enacted, 2 points may be claimed for each subsequent year it remains in effect.</p>
<p>Lbmp T M D L - 05</p> <p>Develop a pet waste brochure or flyer document to educate the public about animal waste contamination of stormwater. The document encourages pet owners to pick up their pet's waste.</p> <p>Alternately, post the document on social media or the municipal website.</p>	<p>The brochures or flyers are to be posted in various public buildings and distributed to the public throughout the year. In the year the number of documents shall equal or exceed the most recent U.S. Census Bureau decennial housing units value for the permit area. The applicable U.S. Census housing units value shall be documented, and the number of documents distributed shall also be documented. This information and copies of the documents shall be retained on file.</p> <p>Documents posted to social media or the website shall have the page copied and printed to retain on file.</p>	<p>The documents may be distributed in any fashion and at any time throughout the year.</p> <p>Documents posted on website(s) shall be posted for at least six months in the year. Documents posted on social media shall be posted six times within the year points are claimed.</p>	<p>1 point may be claimed in a year in which the required number of brochures and/or flyers are distributed, documents posted on social media or the website must be posted for at least as specified.</p>
<p>Lbmp T M D L - 06</p> <p>Distribute "Only Rain Down the Drain" door hangers or similar document.</p>	<p>Provide in portions of the permit area with suspected illicit discharges. In the year the number of documents distributed shall</p>	<p>The documents may be distributed in any fashion and at any time throughout the year.</p>	<p>2 points may be claimed in a year in which the required number of hangers or</p>

APPENDIX G: Total Maximum Daily Load (TMDL) BMP Table

	<p>equal or exceed 10% of the most recent U.S. Census Bureau decennial housing units value for the permit area. The applicable U.S. Census housing units value shall be documented, and the number of documents distributed shall also be documented. This information and copies of the documents shall be retained on file.</p>	<p>Alternately, the document may be posted to social media (at least three times in the year) or posted on the municipal website for a minimum of three months in the year to qualify for points</p>	<p>similar documents are distributed or alternately posted to social media or the municipal website for the required time.</p>
<p>Lbmp T M D L - 07</p> <p>Inspect 10% of all known MS4 outfalls for dry weather discharges either annually or twice per year to identify potential illicit discharges.</p>	<p>Complete inspection of all known MS4 outfalls either annually or twice per year during dry weather periods. If dry weather discharge is found follow-up with investigation to determine if a portion or all the discharge is illicit. Document the findings and initiate efforts to eliminate any identified illicit discharges.</p>	<p>The inspections must be conducted either annually or if twice per year they must be seasonal within the same calendar year (winter, spring, summer, and fall). Points can be claimed for that year. In addition, if an illicit discharge is detected and eliminated in association with this inspection program additional points may be claimed in the year detected or in the year the discharge is eliminated.</p>	<p>3 points may be claimed for annual inspection as required by this BMP, 5 points may be claimed for these inspections completed twice in a year, and if an illicit discharge is detected and <u>eliminated</u>. The 2 additional points may be claimed, only once, either in the year detected or in the year the illicit discharge is eliminated.</p>
<p>Lbmp T M D L - 08</p> <p>Implement an Alternative Stormwater Offsite Pollution Reduction Program.</p>	<p>This program will include installation of BMPs in alternative locations, including outside the Permit Area, within the watershed shared by urban entities or urban and non-urban entities. The alternative stormwater offsite</p>	<p>In the year the Alternative Stormwater Offsite Pollution Reduction Program is approved by KDHE points may be claimed. In subsequent years in which the program is maintained points may be claimed.</p>	<p>5 points may be claimed in the year KDHE approves the program, 4 points may be claimed for each subsequent year it remains in effect.</p>

APPENDIX G: Total Maximum Daily Load (TMDL) BMP Table

	<p>pollution reduction program shall be developed with watershed interests, such as other communities, Watershed Restoration and Protection Strategy (WRAPS) groups and Conservation Districts lying outside the Permit Area for the joint purpose of reducing pollutant loads generated from urban and non-urban lands within the shared watershed. Candidate offsite locations and practices will be consistent with implementing existing watershed plans that identify specific urban and non-urban (such as agricultural) BMP types and locations to achieve TMDLs reductions. The Alternative Stormwater Offsite Pollution Reduction Program shall be subject to KDHE approval and approved by KDHE prior to incorporation into the permittee's SMP.</p>		
<p>Lbmp T M D L - 09</p> <p>Implement a program to collect and properly dispose of litter, on four separate occasions per calendar year, within areas where littering has been identified as a problem. Such areas may include municipal parks, trails, rest areas, or other public lands owned by the permittee.</p>	<p>The four litter collection efforts should, but are not required to, occur seasonally, i.e., winter, spring, summer and fall. If it is unreasonable to collect litter in any season the required four collection efforts may occur in either three seasons or in a minimum of two seasons.</p>	<p>The four collection efforts must occur in a calendar year.</p>	<p>2 points may be claimed for any year in which four collection efforts have occurred in compliance with the requirements of this BMP.</p>

APPENDIX G: Total Maximum Daily Load (TMDL) BMP Table

<p>Lbmp T M D L - 10</p> <p>Establish a program to encourage Rainwater Harvesting.</p>	<p>Provide public education on rainwater harvesting and design guidance for the installation of rain barrels, cisterns, raingardens and other rainwater harvesting devices. When rain barrels are utilized they must be a minimum size of 50 gallons. When raingardens are utilized they must be a minimum of 20 square feet. A rain harvesting system on a commercial setting must have adequate capacity to hold the runoff from the impervious surface for which it is designed to collect on the commercial parcel equal to that generated by a 0.1-inch rainfall event. The installation of rain barrels or rain gardens on five residential lots, or the installation of one rain harvesting system in a commercial setting shall qualify the permittee to claim points for this BMP.</p>	<p>In the year five or more residential rain barrel systems or one commercial cistern are finally constructed and become operational the points may be initially claimed and in subsequent years when at least five residential rain barrel systems or one commercial cistern remain operational points may be claimed.</p>	<p>3 points may be claimed for any year in which sufficient rain harvesting systems are constructed or maintained in operation in compliance with the requirements of this BMP.</p>
<p>Lbmp T M D L - 11</p> <p>Construct and maintain a structural BMP to reduce loadings of sediment and nutrients, including bioretention, detention basins, porous pavement, retention ponds, media filters and any composite treatment trains of multiple BMPs</p>	<p>A construction project installing a structural BMP must be completed prior to awarding of points. Any individual project will be awarded points scaled on the basis of the extent of the contributing area that the BMP will control. The permittee will document maintenance of the constructed BMP in subsequent</p>	<p>By year five of this permit, at least two structural BMP projects will be constructed and maintained. Points will be awarded in the year construction was completed and subsequent points will be awarded in the subsequent years after documentation of maintenance of the project.</p>	<p>4 points may be claimed for any year in which a structural BMP is completed for an area exceeding one acre. 3 points may be claimed for any year in which a structural BMP is completed for an area under one acre.</p>

APPENDIX G: Total Maximum Daily Load (TMDL) BMP Table

	years to continue to be awarded points.		1 bonus point may be awarded for a composite BMP project. 2 points may be awarded in subsequent years for ongoing maintenance of the BMPs.
<p>Lbmp T M D L - 12</p> <p>Construct a stream bank stabilization project.</p>	<p>Install a minimum of 100 feet of bank stabilization at a site(s) with a history of erosion.</p>	<p>The installation of, the minimum 100 feet of bank stabilization must occur in the year points are claimed at a single site or at multiple sites. The sites may be on the same stream or on different streams.</p>	<p>3 points may be claimed for the year in which the required minimum amount of stream bank stabilization is installed, 2 points may be claimed for each subsequent year it remains in effect.</p>

B. Monitoring Requirements

1. Storm Event Monitoring: The permittee shall implement a multi-jurisdictional routine and wet weather monitoring program, as accepted by KDHE on May 24, 2018 and detailed in the Option 2 portion of the document titled "Technical Memorandum 3 - Water Quality Monitoring Approach." The permittee shall implement this monitoring program to support adaptive stormwater management and the evaluation of SMP effectiveness in reducing the discharge of pollutants from the MS4.

The storm event monitoring data for TMDLs, as required in this PART II, may be used to assist in evaluating trends in water quality. This monitoring is not necessarily intended to demonstrate compliance with the requirements of this MS4 NPDES permit.

2. Monitoring Objectives

The monitoring program will incorporate the following objectives:

- I. Measure the effectiveness of the permittee's SMP;
- II. Evaluate MS4 discharge impacts to the receiving waters;
- III. Investigate relative contribution of sources

3. Rotational Monitoring Approach

The monitoring program will consist of both rotating and fixed monitoring stations. Rotating monitoring stations will be monitored within the rotational year. The rotational year occurs on a five-year recurrence interval and is basin specific. Fixed monitoring stations will be monitored on an ongoing basis independent of the rotational year. Monitoring station locations and the rotational schedule are specified in Table 1. Johnson County shall report all eDMR data for all monitoring locations.

Table 1. Rotating Basin Schedule and Monitoring Stations

Basin Number	Map ID Number *	Monitoring Location	Monitoring Year	Deadline for Reporting via eDMR Process	Reporting Municipality	EDMR Code
Basin 2	6	Indian Creek at Marty St.	2024	Jan. 28, 2025	Jo. Co.	001A
	7	Indian Creek at Overland Prkwy.**	2024	Jan. 28, 2025	Jo. Co.	002A
	8	Indian Creek at Pflumm Rd.	2024	Jan. 28, 2025	Jo. Co.	003A
	9	Indian Creek at Stateline**	2024	Jan. 28, 2025	Jo. Co.	004A
	10	Tomahawk Creek at Roe Ave.**	2024	Jan. 28, 2025	Jo. Co.	005A
Basin 6	26	Camp Creek at W 95th St.	2025	Jan. 28, 2026	Jo. Co.	006A
	27	Cedar Creek at W 127th St.	2025	Jan. 28, 2026	Jo. Co.	007A
	28	Cedar Creek at W 83rd St.**	2025	Jan. 28, 2026	Jo. Co.	008A
	29	Clear Creek at Woodland Dr.	2025	Jan. 28, 2026	Jo. Co.	009A
	30	Little Cedar Creek at W 119th St.	2025	Jan. 28, 2026	Jo. Co.	010A
	31	Little Mill Creek nr Midland Rd.	2025	Jan. 28, 2026	Jo. Co.	011A
	32	Mill Creek at Johnson Dr.**	2025	Jan. 28, 2026	Jo. Co.	012A
	33	Mill Creek at 85th St.	2025	Jan. 28, 2026	Jo. Co.	013A

Basin 3	12	Blue River at Kenneth Rd.**	2026	Jan. 28, 2027	Jo. Co.	014A
	13	Camp Branch at W 175th St.	2026	Jan. 28, 2027	Jo. Co.	015A
	14	Coffee Creek at S Switzer Rd.	2026	Jan. 28, 2027	Jo. Co.	016A
	15	Negro Creek at Mission Rd.	2026	Jan. 28, 2027	Jo. Co.	017A
	16	Wolf Creek at W 179th St.	2026	Jan. 28, 2027	Jo. Co.	018A
	11	Blue River at Hwy 69**	2026	Jan. 28, 2027	Jo. Co.	019A
* Map ID numbers are from Table 3 of Technical Memorandum 3 as prepared by HDR ** Fixed Monitoring Locations						

C. Monitoring Frequency and Periods Criteria

The monitoring program will incorporate the requirements identified in Table 2. Additional monitoring may be conducted outside these time frames if needed to meet the monitoring objectives. E. coli samples shall be collected as a grab sample. All other nutrient and conventional samples shall be collected as a grab or composite sample.

Table 2.

Station Type	Monitoring Type	Basin	Monitoring Frequency	Pollutant Parameters
Fixed	Routine	All	Minimum of six events/year (April - Sept)	Nutrients; Conventional; Field
Fixed	Storm	Rotational Basin Only	Minimum of three events/rotational Year (April - Sept)	Nutrients; Conventional
Rotating	Routine	Rotational Basin Only	Minimum of six events/rotational Year (April - Sept)	Nutrients; Conventional; Field
Rotating	Storm	Rotational Basin Only	Minimum of three events/rotational Year (April - Sept)	Nutrients; Conventional

Pollutants parameter(s) identified in each analyte category are as follows:

- Nutrients: Total Phosphorus (TP), Ortho-Phosphorus (O-PO₄), Total Nitrogen (TN)
- Conventional: Escherichia coli (E. coli), Total Suspended Solids (TSS), Turbidity
- Field: Dissolved Oxygen (DO), pH, Temperature, Specific Conductance

TMDL Impairment	Parameter to be Monitored	MRL ⁽¹⁾
Nutrients	Total Phosphorus as P (mg/l)	0.05 mg/l
Nutrients	Orthophosphate as P (mg/l) ⁽²⁾	0.05 mg/l
Nutrients	Nitrate + Nitrite as N (mg/l)	0.10 mg/l
Nutrients	Total Kjeldahl Nitrogen (mg/l)	1 mg/l
Nutrients	Total Nitrogen (mg/l)	Calculated ⁽³⁾
Sediment	Total Suspended Solids (mg/l)	10 mg/l
Sediment	Turbidity (NTU)	
Bacteria	E. coli (Col/100 ml or MPN)	10 col/100 ml or MPN