

Streetworks		Type
Catalog #	ANXV2-5000-238-6000	ANXV2-LED (3000K) Type II-B
Project		
Comments		
Prepared by		

DESCRIPTION

The ANXV2 LED roadway luminaire combines optical performance, energy efficiency, and outstanding ingress protection (IP68) for applications of any wet location. The luminaire is designed to meet the requirements of any unparallel uniformity and budget-bearing operating coats for municipal streets and highways. UL/cUL listed for wet locations. IP68 enclosure rating available.

SPECIFICATION FEATURES

- Construction**
 - 5000Hz, 347V, 600V
 - 120V/240V, 3000K, 5000K
 - Compatible for use with 480V systems
 - 3G vibration rated
 - Light square is IP68 rated
- Electrical**
 - 5000Hz, 347V, 600V
 - 120V/240V, 3000K, 5000K
 - Compatible for use with 480V systems
 - 3G vibration rated
 - Light square is IP68 rated
- Mounting**
 - Two-bolt-to-beaker-plates, with 2.5 mil nominal thickness
 - Flashed-in-place bird guard seals around 1"-1/4" to 2" (1.56" to 2.38" O.D.) mounting arms.
- Finish**
 - Housing and cast parts finished with anodized aluminum
 - Interior surfaces finished with a polyurethane powder coat paint.
 - 2.5 mil nominal thickness for superior protection against fading and corrosion.
 - Manufacturer representative # Eston for a complete selection of standard colors.
- Optics**
 - Optics are precision designed to optimize efficiency and light output.
 - Ambient operating temperature from -40°C to 40°C. Standard three-terminal block.
 - Offered standard in 4000K (4-275K) CCT and 70 CRI.
- Optical**
 - High efficiency, injection-molded lens.
 - Optics are precision designed to optimize efficiency and light output.
 - Ambient operating temperature from -40°C to 40°C. Standard three-terminal block.
 - Offered standard in 4000K (4-275K) CCT and 70 CRI.
- Warranty**
 - Five-year warranty.

ANXV2

2 Light Squares
LED
ROADWAY LUMINAIRE



CERTIFICATION DATA

ICC 9001 Square
3G Vibration Rated
Damp-Resistant Construction
UL and cUL Wet Location Listed
U.S. and cUL Wet Location Listed

ENERGY DATA

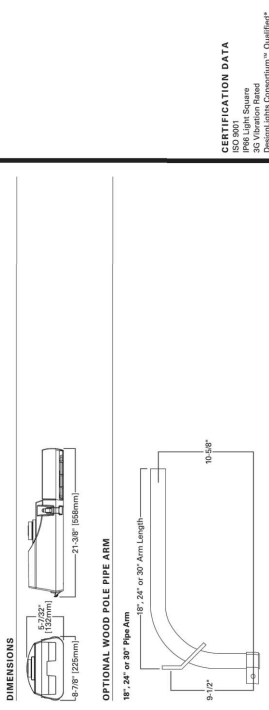
Electronic LED Driver
20% Total Harmonic Distortion
120-277V/50 and 60 Hz
40°C Minimum Temperature Rating
-40°C Ambient Temperature Rating

EPA

Effective Projected Area (Eq. FE-1.0)
Approximate Net Weight:
22 lbs. (10.0 kg.)



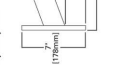
DIMENSIONS



OPTIONAL MOUNTING ARM



OPTIONAL MOUNTING ARM

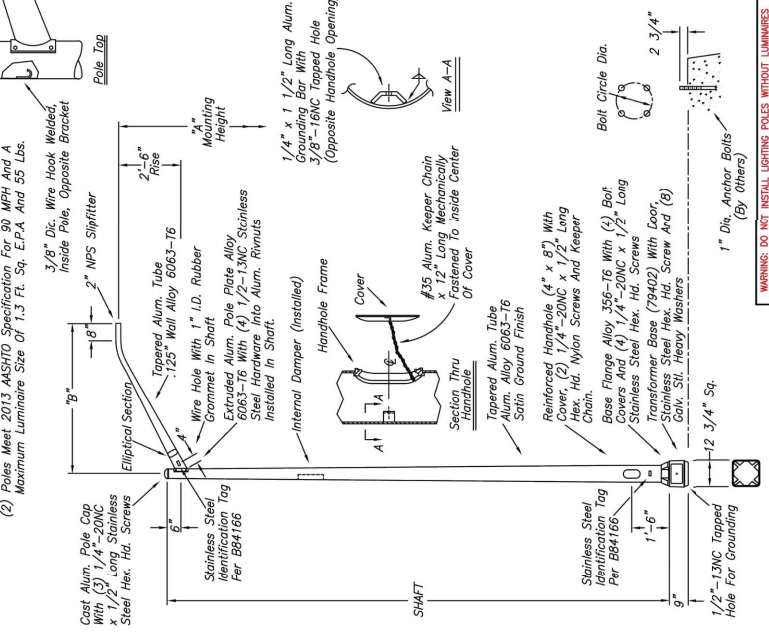


ARM DRILLING



Quantity	Item No.	A	B	Shaft Size	Anchor Bolt	Bolt Circle Bracket Designation	Overhead Park Designation
	84165-001	30'-01"	6'-01"	7" x 4 1/2" x 1.88"	3/8" x 36" x 4"	10 1/2"	OP301
	84165-002	30'-01"	8'-01"	7" x 4 1/2" x 1.88"	3/8" x 36" x 4"	10 1/2"	OP301
	84165-003	30'-01"	8'-01"	7" x 4 1/2" x 1.88"	3/8" x 36" x 4"	11 1/2"	OP303
	84165-004	40'-01"	8'-01"	7" x 4 1/2" x 1.88"	3/8" x 36" x 4"	11 1/2"	OP401
	84165-005	40'-01"	8'-01"	7" x 4 1/2" x 1.88"	3/8" x 36" x 4"	11 1/2"	OP401
	84165-006	30'-01"	6'-01"	7" x 4 1/2" x 1.88"	3/8" x 36" x 4"	11 1/2"	OP401
	84165-007	30'-01"	8'-01"	7" x 4 1/2" x 1.88"	3/8" x 36" x 4"	11 1/2"	OP401
	84165-008	30'-01"	8'-01"	7" x 4 1/2" x 1.88"	3/8" x 36" x 4"	11 1/2"	OP401
	84165-009	30'-01"	8'-01"	7" x 4 1/2" x 1.88"	3/8" x 36" x 4"	11 1/2"	OP401
	84165-010	30'-01"	8'-01"	7" x 4 1/2" x 1.88"	3/8" x 36" x 4"	11 1/2"	OP401

Notes: (1) Package Loose Hardware in Small Bag (One Bag Per Pole)
(2) Poles Meet 2013 MASH/TO Specification For 90 MPH And A Maximum Luminaire Size Of 1.3 FL Sq. EPA And 55 Lbs.



REVISONS		DATE	DESCRIPTION
1	Wire Hook Added	10/04	
2	DOB Added	8/03	
3	REVISED MASH/TO AND RÜPPRECHT	12/14	
4	DOB/ABE/B	12/14	

hapco
Abingdon, Va.
B84165

GARDNER, KANSAS PUBLIC WORKS/ENGINEERING DIVISION

GARDNER KANSAS
Blazing New Trails

APPROVED
TRM CITY ENGINEER
2-1-07 DATE

REVISED
11/4/22

STANDARD
DETAIL
90-7