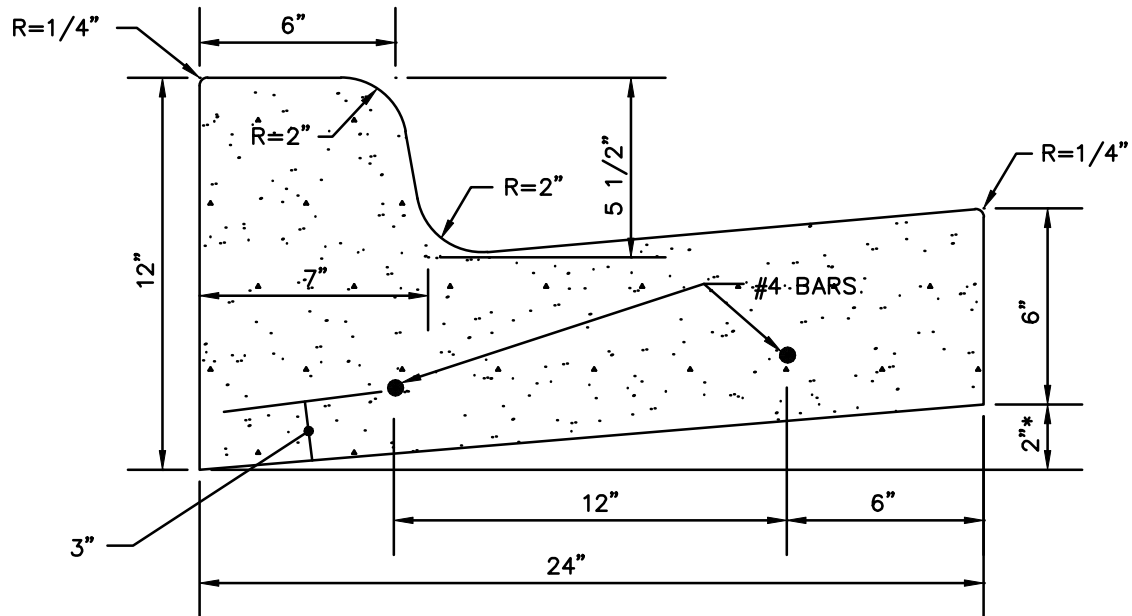


NOTE:

1. EXPANSION, CONTRACTION, OR CONSTRUCTION JOINTS ARE TO BE SAME AS NOTED ON TYPE "A" CURB AND GUTTER DETAIL.
2. KCMMB4K CONCRETE SHALL BE USED THROUGHOUT AND ADHERE TO CITY OF GARDNER TECHNICAL SPECIFICATIONS.



* FOR 8" ASPHALT PAVEMENT, CONCRETE FACE OF CURB SHALL BE 7 1/2".



APPROVED

TRM
CITY ENGINEER

2-1-07
DATE

REVISED

5-25-22

TYPE "B" CURB
AND GUTTER
DETAIL

STANDARD
DETAIL
21-2